



ELECTRONIC COPY

LG660456519
Report verification at igi.org



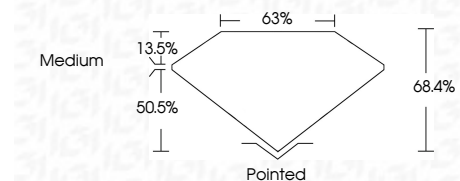
October 18, 2024
IGI Report Number **LG660456519**
Description **LABORATORY GROWN DIAMOND**

Shape and Cutting Style **CUT CORNERED
RECTANGULAR MODIFIED
BRILLIANT**

Measurements **10.50 X 7.02 X 4.80 MM**

GRADING RESULTS

Carat Weight **3.05 CARATS**
Color Grade **I**
Clarity Grade **VVS 2**



ADDITIONAL GRADING INFORMATION

Polish **EXCELLENT**
Symmetry **EXCELLENT**
Fluorescence **NONE**
Inscription(s) **IGI LG660456519**
Comments: This Laboratory Grown Diamond was created by Chemical Vapor Deposition (CVD) growth process. Type IIa



IGI

October 18, 2024
IGI Report No. LG660456519
CUT CORNERED RECT. MODIFIED BRILLIANT
3.05 CARATS I
3.05 CARATS I
Color Grade I
Clarity Grade VVS 2
Depth 68.4%
Table 50.5%
Girdle Medium
Pointed
EXCELLENT
EXCELLENT
NONE
IGI LG660456519
Comments: This Laboratory Grown Diamond was created by Chemical Vapor Deposition (CVD) growth process. Type IIa

LABORATORY GROWN DIAMOND REPORT

October 18, 2024
IGI Report Number **LG660456519**
Description **LABORATORY GROWN DIAMOND**
Shape and Cutting Style **CUT CORNERED RECTANGULAR
MODIFIED BRILLIANT**
Measurements **10.50 X 7.02 X 4.80 MM**

GRADING RESULTS

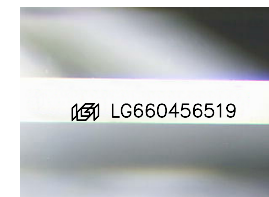
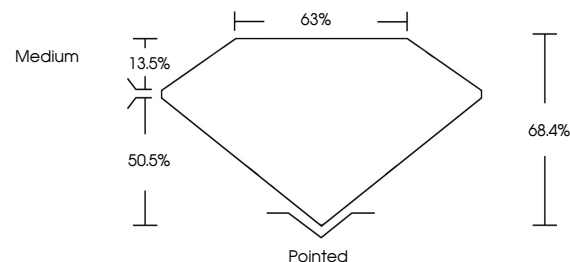
Carat Weight **3.05 CARATS**
Color Grade **I**
Clarity Grade **VVS 2**

ADDITIONAL GRADING INFORMATION

Polish **EXCELLENT**
Symmetry **EXCELLENT**
Fluorescence **NONE**
Inscription(s) **IGI LG660456519**

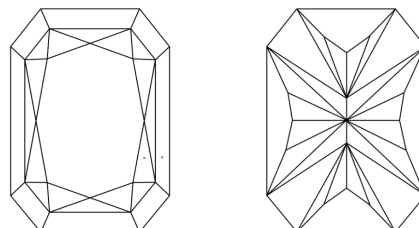
Comments: This Laboratory Grown Diamond was created by Chemical Vapor Deposition (CVD) growth process. Type IIa

PROPORTIONS



Sample Image Used

CLARITY CHARACTERISTICS



KEY TO SYMBOLS

Red symbols indicate internal characteristics.
Green symbols indicate external characteristics.

COLOR

D E F G H I J Faint Very Light Light

CLARITY

IF	VVS ¹⁻²	VS ¹⁻²	SI ¹⁻²	I ¹⁻³
Internally Flawless	Very Very Slightly Included	Very Slightly Included	Slightly Included	Included

