



**ELECTRONIC COPY**

LG660469680  
Report verification at igi.org



October 21, 2024

IGI Report Number **LG660469680**

Description **LABORATORY GROWN DIAMOND**

Shape and Cutting Style **PEAR BRILLIANT**

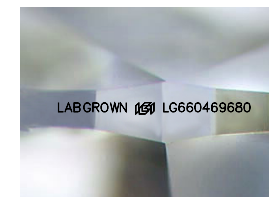
Measurements **13.35 X 8.05 X 5.13 MM**

**GRADING RESULTS**

Carat Weight **3.18 CARATS**

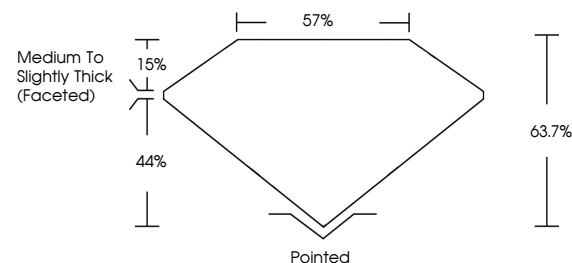
Color Grade **E**

Clarity Grade **VS 1**

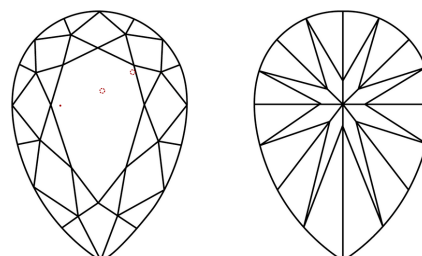


Sample Image Used

**PROPORTIONS**



**CLARITY CHARACTERISTICS**



**KEY TO SYMBOLS**

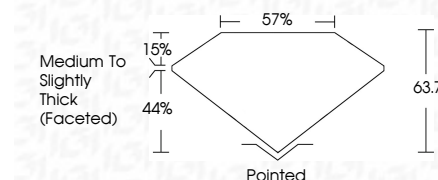
Red symbols indicate internal characteristics.  
Green symbols indicate external characteristics.

**COLOR**

D E F G H I J Faint Very Light Light

**CLARITY**

IF	VS <sup>1-2</sup>	VS <sup>1-2</sup>	SI <sup>1-2</sup>	I <sup>1-3</sup>
Internally Flawless	Very Very Slightly Included	Very Slightly Included	Slightly Included	Included



**ADDITIONAL GRADING INFORMATION**

Polish **EXCELLENT**

Symmetry **EXCELLENT**

Fluorescence **NONE**

Inscription(s) **LABGROWN (LGI) LG660469680**

Comments: This Laboratory Grown Diamond was created by Chemical Vapor Deposition (CVD) growth process. Type IIa



**IGI**



October 21, 2024  
IGI Report No LG660469680  
PEAR BRILLIANT

3.18 CARATS  
E

13.35 X 8.05 X 5.13 MM

Carat Weight  
Color Grade  
Clarity Grade  
Table  
Depth  
Girdle

3.18 CARATS  
E  
VS 1  
63.7%  
44%  
57%

Medium to Slightly Thick (Faceted)

Pointed  
EXCELLENT  
EXCELLENT  
NONE  
LABGROWN (LGI) LG660469680

Culet  
Polish  
Symmetry  
Fluorescence  
Inscription(s)

Comments: This Laboratory Grown Diamond was created by Chemical Vapor Deposition (CVD) growth process. Type IIa