



ELECTRONIC COPY

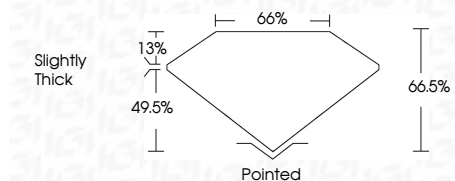
LG660474993
Report verification at igi.org



October 19, 2024
IGI Report Number **LG660474993**
Description **LABORATORY GROWN DIAMOND**
Shape and Cutting Style **SQUARE EMERALD CUT**
Measurements **12.89 X 12.29 X 8.17 MM**

GRADING RESULTS

Carat Weight **12.04 CARATS**
Color Grade **H**
Clarity Grade **VS 1**



ADDITIONAL GRADING INFORMATION

Polish **EXCELLENT**
Symmetry **EXCELLENT**
Fluorescence **NONE**
Inscription(s) **IGI LG660474993**
Comments: This Laboratory Grown Diamond was created by Chemical Vapor Deposition (CVD) growth process. Type IIa



October 19, 2024
IGI Report No **LG660474993**
SQUARE EMERALD CUT
12.04 CARATS
H
12.89 X 12.29 X 8.17 MM
Carat Weight
Color Grade
Clarity Grade
Table
Girdle
Slightly Thick
Pointed
EXCELLENT
EXCELLENT
NONE
IGI LG660474993
Inscription(s)
Comments: This Laboratory Grown Diamond was created by Chemical Vapor Deposition (CVD) growth process. Type IIa

LABORATORY GROWN DIAMOND REPORT

October 19, 2024
IGI Report Number **LG660474993**
Description **LABORATORY GROWN DIAMOND**
Shape and Cutting Style **SQUARE EMERALD CUT**
Measurements **12.89 X 12.29 X 8.17 MM**

GRADING RESULTS

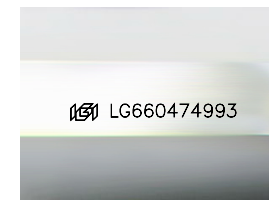
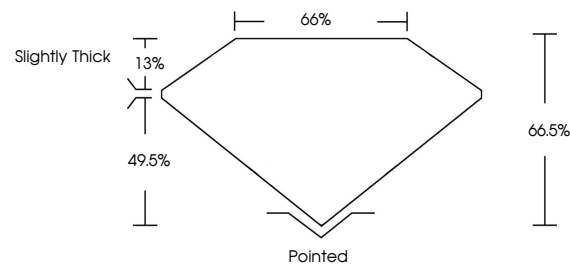
Carat Weight **12.04 CARATS**
Color Grade **H**
Clarity Grade **VS 1**

ADDITIONAL GRADING INFORMATION

Polish **EXCELLENT**
Symmetry **EXCELLENT**
Fluorescence **NONE**
Inscription(s) **IGI LG660474993**

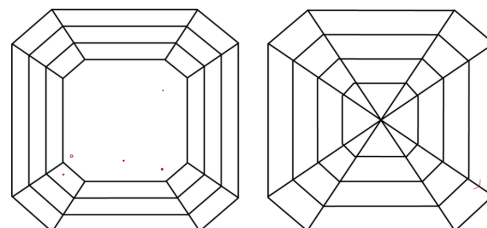
Comments: This Laboratory Grown Diamond was created by Chemical Vapor Deposition (CVD) growth process. Type IIa

PROPORTIONS



Sample Image Used

CLARITY CHARACTERISTICS



KEY TO SYMBOLS

Red symbols indicate internal characteristics.
Green symbols indicate external characteristics.

COLOR

D E F G H I J Faint Very Light Light

CLARITY

| IF | VS ¹⁻² | VS ¹⁻² | SI ¹⁻² | I ¹⁻³ |
|---------------------|-----------------------------|------------------------|-------------------|------------------|
| Internally Flawless | Very Very Slightly Included | Very Slightly Included | Slightly Included | Included |

