



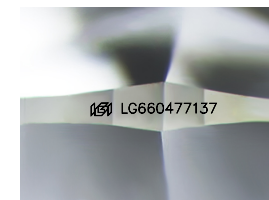
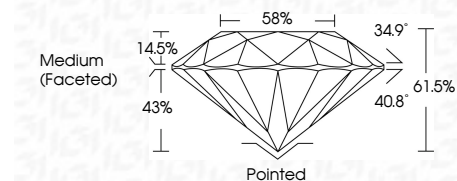
ELECTRONIC COPY

LG660477137
Report verification at igi.org



October 21, 2024
IGI Report Number LG660477137
Description LABORATORY GROWN DIAMOND
Shape and Cutting Style ROUND BRILLIANT
Measurements 6.40 - 6.43 X 3.94 MM

GRADING RESULTS
Carat Weight 1.00 CARAT
Color Grade F
Clarity Grade VVS 1
Cut Grade IDEAL



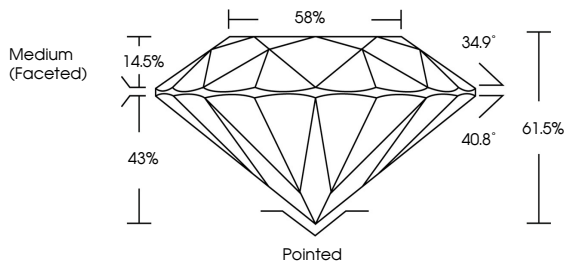
Sample Image Used

ADDITIONAL GRADING INFORMATION
Polish EXCELLENT
Symmetry EXCELLENT
Fluorescence NONE
Inscription(s) LG660477137
Comments: HEARTS & ARROWS
As Grown - No indication of post-growth treatment.
This Laboratory Grown Diamond was created by High Pressure High Temperature (HPHT) growth process.
Type II

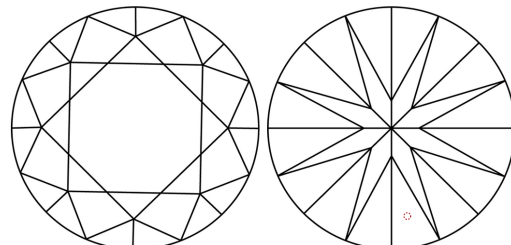


October 21, 2024
IGI Report No LG660477137
ROUND BRILLIANT
6.40 - 6.43 X 3.94 MM
1.00 CARAT F
VVS 1 IDEAL
61.5% 58%
Medium (Faceted)
Pointed EXCELLENT EXCELLENT NONE
None LG660477137
Comments: HEARTS & ARROWS
As Grown - No indication of post-growth treatment.
This Laboratory Grown Diamond was created by High Pressure High Temperature (HPHT) growth process.
Type II

PROPORTIONS



CLARITY CHARACTERISTICS



KEY TO SYMBOLS

Red symbols indicate internal characteristics.
Green symbols indicate external characteristics.



COLOR

D E F G H I J Faint Very Light Light

CLARITY

IF VVS 1-2 VS 1-2 SI 1-2 I 1-3
Internally Flawless Very Very Slightly Included Very Slightly Included Slightly Included Included

