



ELECTRONIC COPY

LG660483581
Report verification at igi.org



October 22, 2024
IGI Report Number: LG660483581
Description: LABORATORY GROWN DIAMOND
Shape and Cutting Style: ROUND BRILLIANT
Measurements: 6.48 - 6.51 X 4.03 MM
GRADING RESULTS
Carat Weight: 1.05 CARAT
Color Grade: D
Clarity Grade: INTERNALLY FLAWLESS
Cut Grade: IDEAL

October 22, 2024
IGI Report Number: LG660483581
Description: LABORATORY GROWN DIAMOND
Shape and Cutting Style: ROUND BRILLIANT
Measurements: 6.48 - 6.51 X 4.03 MM

GRADING RESULTS

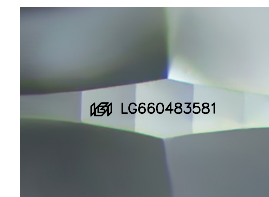
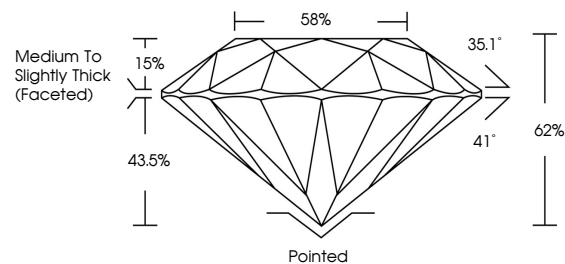
Carat Weight: 1.05 CARAT
Color Grade: D
Clarity Grade: INTERNALLY FLAWLESS
Cut Grade: IDEAL

ADDITIONAL GRADING INFORMATION

Polish: EXCELLENT
Symmetry: EXCELLENT
Fluorescence: NONE
Inscription(s): IGI LG660483581

Comments: As Grown - No indication of post-growth treatment. This Laboratory Grown Diamond was created by High Pressure High Temperature (HPHT) growth process. Type II

PROPORTIONS



Sample Image Used

CLARITY CHARACTERISTICS



KEY TO SYMBOLS

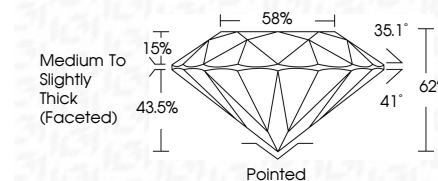
Red symbols indicate internal characteristics. Green symbols indicate external characteristics.

COLOR

D E F G H I J Faint Very Light Light

CLARITY

IF VS 1-2 VS 1-2 SI 1-2 I 1-3
Internally Flawless Very Very Slightly Included Very Slightly Included Slightly Included Included



ADDITIONAL GRADING INFORMATION

Polish: EXCELLENT
Symmetry: EXCELLENT
Fluorescence: NONE
Inscription(s): IGI LG660483581
Comments: As Grown - No indication of post-growth treatment. This Laboratory Grown Diamond was created by High Pressure High Temperature (HPHT) growth process. Type II



October 22, 2024
IGI Report No. LG660483581
ROUND BRILLIANT
1.05 CARAT
D
6.48 - 6.51 X 4.03 MM
Color Grade: D
Clarity Grade: IF
Depth: 62%
Table: 88%
Medium To Slightly Thick (Faceted)
Cut: Pointed
Polish: EXCELLENT
Symmetry: EXCELLENT
Fluorescence: NONE
Inscriptions(s): IGI LG660483581
Comments: As Grown - No indication of post-growth treatment. This Laboratory Grown Diamond was created by High Pressure High Temperature (HPHT) growth process. Type II