



**ELECTRONIC COPY**

LG660484461  
Report verification at igi.org



October 21, 2024

IGI Report Number **LG660484461**

Description **LABORATORY GROWN DIAMOND**

Shape and Cutting Style **CUSHION BRILLIANT**

Measurements **13.11 X 11.73 X 7.37 MM**

**GRADING RESULTS**

Carat Weight **10.10 CARATS**

Color Grade **E**

Clarity Grade **VS 2**

October 21, 2024

IGI Report Number **LG660484461**

Description **LABORATORY GROWN DIAMOND**

Shape and Cutting Style **CUSHION BRILLIANT**

Measurements **13.11 X 11.73 X 7.37 MM**

**GRADING RESULTS**

Carat Weight **10.10 CARATS**

Color Grade **E**

Clarity Grade **VS 2**

**ADDITIONAL GRADING INFORMATION**

Polish **EXCELLENT**

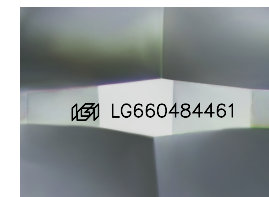
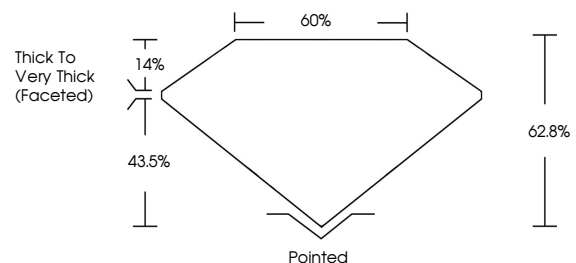
Symmetry **EXCELLENT**

Fluorescence **NONE**

Inscription(s) **IGI LG660484461**

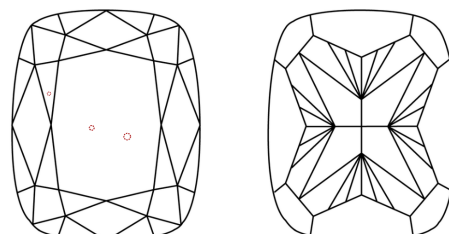
Comments: This Laboratory Grown Diamond was created by Chemical Vapor Deposition (CVD) growth process.  
Type IIa

**PROPORTIONS**



Sample Image Used

**CLARITY CHARACTERISTICS**



**KEY TO SYMBOLS**

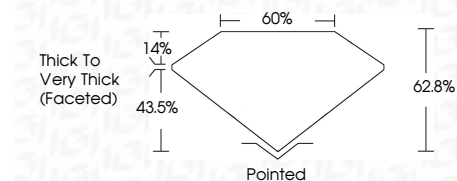
Red symbols indicate internal characteristics.  
Green symbols indicate external characteristics.

**COLOR**

D E F G H I J Faint Very Light Light

**CLARITY**

IF	VS <sup>1-2</sup>	VS <sup>1-2</sup>	SI <sup>1-2</sup>	I <sup>1-3</sup>
Internally Flawless	Very Very Slightly Included	Very Slightly Included	Slightly Included	Included



**ADDITIONAL GRADING INFORMATION**

Polish **EXCELLENT**

Symmetry **EXCELLENT**

Fluorescence **NONE**

Inscription(s) **IGI LG660484461**

Comments: This Laboratory Grown Diamond was created by Chemical Vapor Deposition (CVD) growth process.  
Type IIa



**IGI**



October 21, 2024  
IGI Report No LG660484461  
CUSHION BRILLIANT

13.11 X 11.73 X 7.37 MM

10.10 CARATS  
E

Carat Weight  
Color Grade  
Clarity Grade  
Table  
Depth  
Girdle

VS 2  
E  
VS 2  
62.8%  
43.5%

Thick to Very Thick (Faceted)

Pointed  
EXCELLENT  
EXCELLENT  
NONE  
IGI LG660484461

Culet  
Polish  
Symmetry  
Fluorescence  
Inscription(s)

Comments: This Laboratory Grown Diamond was created by Chemical Vapor Deposition (CVD) growth process.  
Type IIa