



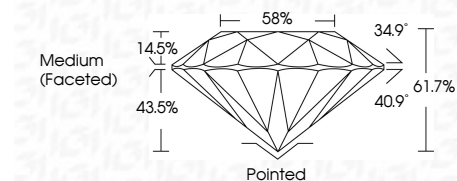
ELECTRONIC COPY

LG660489161 Report verification at igi.org



October 22, 2024 IGI Report Number LG660489161 Description LABORATORY GROWN DIAMOND Shape and Cutting Style ROUND BRILLIANT Measurements 8.58 - 8.64 X 5.32 MM

GRADING RESULTS Carat Weight 2.44 CARATS Color Grade D Clarity Grade VS 1 Cut Grade IDEAL



ADDITIONAL GRADING INFORMATION Polish EXCELLENT Symmetry EXCELLENT Fluorescence NONE Inscription(s) IGI LG660489161 Comments: This Laboratory Grown Diamond was created by Chemical Vapor Deposition (CVD) growth process. Type IIa



October 22, 2024 IGI Report No LG660489161 ROUND BRILLIANT 8.58 - 8.64 X 5.32 MM 2.44 CARATS D VS 1 IDEAL 61.7% 58% Medium (Faceted) Pointed EXCELLENT EXCELLENT NONE IGI LG660489161 Comments: This Laboratory Grown Diamond was created by Chemical Vapor Deposition (CVD) growth process. Type IIa

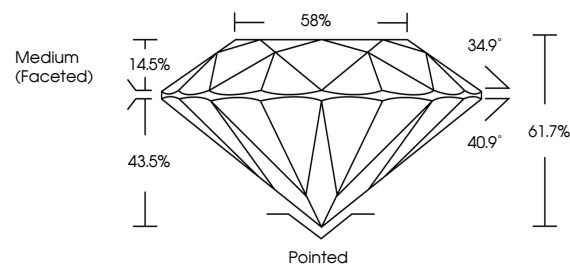
October 22, 2024 IGI Report Number LG660489161 Description LABORATORY GROWN DIAMOND Shape and Cutting Style ROUND BRILLIANT Measurements 8.58 - 8.64 X 5.32 MM

GRADING RESULTS Carat Weight 2.44 CARATS Color Grade D Clarity Grade VS 1 Cut Grade IDEAL

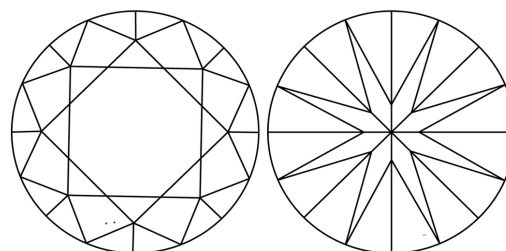
ADDITIONAL GRADING INFORMATION Polish EXCELLENT Symmetry EXCELLENT Fluorescence NONE Inscription(s) IGI LG660489161

Comments: This Laboratory Grown Diamond was created by Chemical Vapor Deposition (CVD) growth process. Type IIa

PROPORTIONS

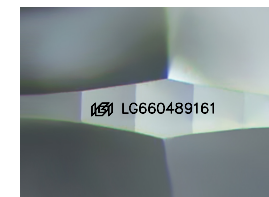


CLARITY CHARACTERISTICS



KEY TO SYMBOLS

Red symbols indicate internal characteristics. Green symbols indicate external characteristics.



Sample Image Used

COLOR

D E F G H I J Faint Very Light Light

CLARITY

IF VS 1-2 VS 1-2 SI 1-2 I 1-3 Internally Flawless Very Very Slightly Included Very Slightly Included Slightly Included Included

