



ELECTRONIC COPY

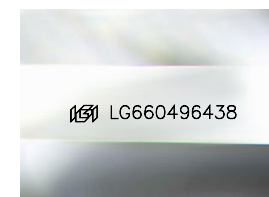
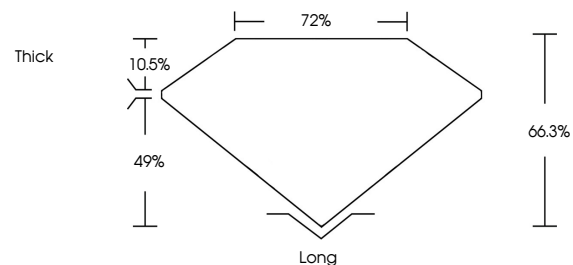
LG660496438
Report verification at igi.org



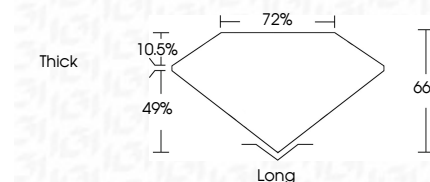
November 19, 2024
IGI Report Number **LG660496438**
Description **LABORATORY GROWN DIAMOND**
Shape and Cutting Style **EMERALD CUT**
Measurements **11.44 X 7.83 X 5.19 MM**
GRADING RESULTS
Carat Weight **5.00 CARATS**
Color Grade **E**
Clarity Grade **VS 2**

November 19, 2024
IGI Report Number **LG660496438**
Description **LABORATORY GROWN DIAMOND**
Shape and Cutting Style **EMERALD CUT**
Measurements **11.44 X 7.83 X 5.19 MM**
GRADING RESULTS
Carat Weight **5.00 CARATS**
Color Grade **E**
Clarity Grade **VS 2**

PROPORTIONS



Sample Image Used



ADDITIONAL GRADING INFORMATION

Polish **EXCELLENT**
Symmetry **EXCELLENT**
Fluorescence **NONE**
Inscription(s) **IGI LG660496438**

Comments: This Laboratory Grown Diamond was created by Chemical Vapor Deposition (CVD) growth process.
Type IIa

ADDITIONAL GRADING INFORMATION

Polish **EXCELLENT**
Symmetry **EXCELLENT**
Fluorescence **NONE**
Inscription(s) **IGI LG660496438**
Comments: This Laboratory Grown Diamond was created by Chemical Vapor Deposition (CVD) growth process.
Type IIa

COLOR

D E F G H I J Faint Very Light Light

CLARITY

IF	VS ¹⁻²	VS ¹⁻²	SI ¹⁻²	I ¹⁻³
Internally Flawless	Very Very Slightly Included	Very Slightly Included	Slightly Included	Included



IGI

November 19, 2024
IGI Report No **LG660496438**
EMERALD CUT
11.44 X 7.83 X 5.19 MM
5.00 CARATS
E
VS 2
66.3%
72%
Thick
Long
EXCELLENT
EXCELLENT
NONE
IGI LG660496438

Comments: This Laboratory Grown Diamond was created by Chemical Vapor Deposition (CVD) growth process.
Type IIa