



ELECTRONIC COPY

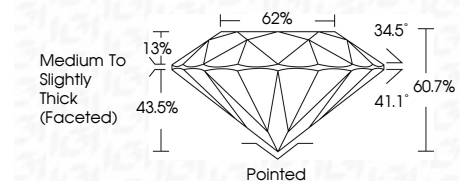
LG661401953 Report verification at igi.org



October 20, 2024 IGI Report Number LG661401953 Description LABORATORY GROWN DIAMOND Shape and Cutting Style ROUND BRILLIANT Measurements 7.69 - 7.75 X 4.69 MM

GRADING RESULTS

Carat Weight 1.74 CARAT Color Grade E Clarity Grade VS 1 Cut Grade EXCELLENT



ADDITIONAL GRADING INFORMATION

Polish EXCELLENT Symmetry EXCELLENT Fluorescence NONE Inscription(s) IGI LG661401953 Comments: This Laboratory Grown Diamond was created by Chemical Vapor Deposition (CVD) growth process. Type IIa



October 20, 2024 IGI Report No LG661401953 ROUND BRILLIANT 7.69 - 7.75 X 4.69 MM 1.74 CARAT E VS 1 EXCELLENT 60.7% 62% Medium To Slightly Thick (Faceted) Pointed EXCELLENT EXCELLENT NONE IGI LG661401953

Comments: This Laboratory Grown Diamond was created by Chemical Vapor Deposition (CVD) growth process. Type IIa

October 20, 2024 IGI Report Number LG661401953 Description LABORATORY GROWN DIAMOND Shape and Cutting Style ROUND BRILLIANT Measurements 7.69 - 7.75 X 4.69 MM

GRADING RESULTS

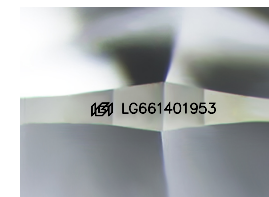
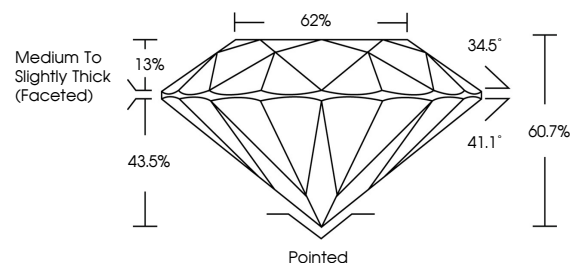
Carat Weight 1.74 CARAT Color Grade E Clarity Grade VS 1 Cut Grade EXCELLENT

ADDITIONAL GRADING INFORMATION

Polish EXCELLENT Symmetry EXCELLENT Fluorescence NONE Inscription(s) IGI LG661401953

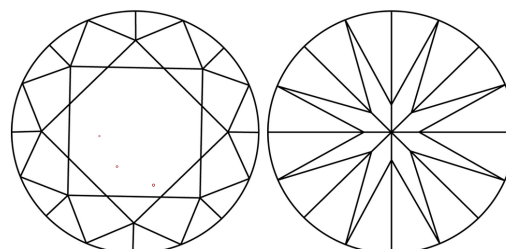
Comments: This Laboratory Grown Diamond was created by Chemical Vapor Deposition (CVD) growth process. Type IIa

PROPORTIONS



Sample Image Used

CLARITY CHARACTERISTICS



KEY TO SYMBOLS

Red symbols indicate internal characteristics. Green symbols indicate external characteristics.

COLOR

D E F G H I J Faint Very Light Light

CLARITY

IF VS 1-2 VS 1-2 SI 1-2 I 1-3 Internally Flawless Very Very Slightly Included Very Slightly Included Slightly Included Included

