



ELECTRONIC COPY

LG661402913
Report verification at igi.org



October 21, 2024

IGI Report Number **LG661402913**

Description **LABORATORY GROWN DIAMOND**

Shape and Cutting Style **PRINCESS CUT**

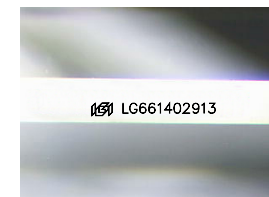
Measurements **8.40 X 8.23 X 5.76 MM**

GRADING RESULTS

Carat Weight **3.64 CARATS**

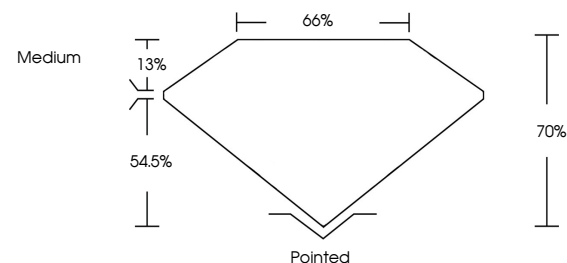
Color Grade **D**

Clarity Grade **VS 1**

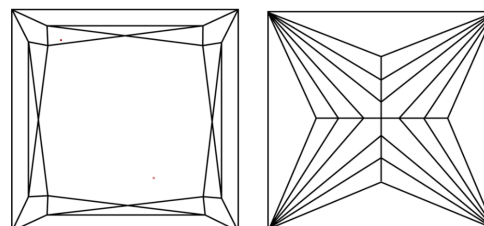


Sample Image Used

PROPORTIONS



CLARITY CHARACTERISTICS



KEY TO SYMBOLS

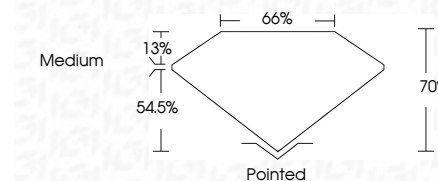
Red symbols indicate internal characteristics.
Green symbols indicate external characteristics.

COLOR

D E F G H I J Faint Very Light Light

CLARITY

IF	VS ¹⁻²	VS ¹⁻²	SI ¹⁻²	I ¹⁻³
Internally Flawless	Very Very Slightly Included	Very Slightly Included	Slightly Included	Included



ADDITIONAL GRADING INFORMATION

Polish **EXCELLENT**

Symmetry **EXCELLENT**

Fluorescence **NONE**

Inscription(s) **IGI LG661402913**

Comments: This Laboratory Grown Diamond was created by Chemical Vapor Deposition (CVD) growth process.
Type IIa



IGI



October 21, 2024
IGI Report No. LG661402913
PRINCESS CUT
8.40 X 8.23 X 5.76 MM
3.64 CARATS
D
VS 1
70%
65%
Medium
Pointed
EXCELLENT
EXCELLENT
NONE
IGI LG661402913
Comments: This Laboratory Grown Diamond was created by Chemical Vapor Deposition (CVD) growth process.
Type IIa