



ELECTRONIC COPY

LG661404100
Report verification at igi.org



October 21, 2024

IGI Report Number **LG661404100**

Description **LABORATORY GROWN DIAMOND**

Shape and Cutting Style **PRINCESS CUT**

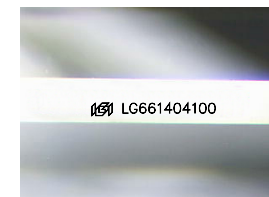
Measurements **6.52 X 6.43 X 4.28 MM**

GRADING RESULTS

Carat Weight **1.59 CARAT**

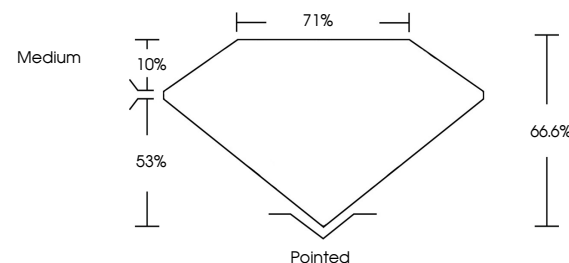
Color Grade **E**

Clarity Grade **VVS 2**

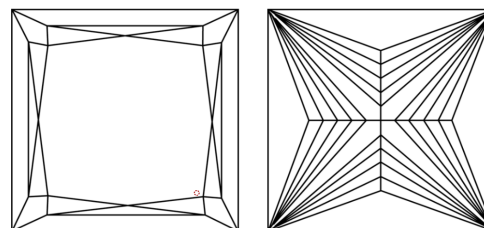


Sample Image Used

PROPORTIONS



CLARITY CHARACTERISTICS



KEY TO SYMBOLS

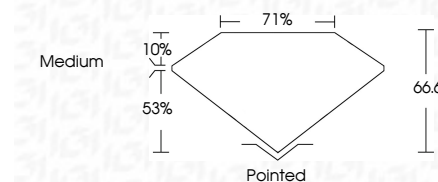
Red symbols indicate internal characteristics.
Green symbols indicate external characteristics.

COLOR

D E F G H I J Faint Very Light Light

CLARITY

IF	VS ¹⁻²	VS ¹⁻²	SI ¹⁻²	I ¹⁻³
Internally Flawless	Very Very Slightly Included	Very Slightly Included	Slightly Included	Included



ADDITIONAL GRADING INFORMATION

Polish **EXCELLENT**

Symmetry **EXCELLENT**

Fluorescence **NONE**

Inscription(s) **IGI LG661404100**

Comments: This Laboratory Grown Diamond was created by Chemical Vapor Deposition (CVD) growth process.
Type IIa



IGI

October 21, 2024
IGI Report No LG661404100
PRINCESS CUT

6.52 X 6.43 X 4.28 MM

1.59 CARAT
E

VVS 2
66.6%
71%
Medium

Pointed
EXCELLENT
EXCELLENT
NONE
IGI LG661404100

Comments: This Laboratory Grown Diamond was created by Chemical Vapor Deposition (CVD) growth process.
Type IIa

