



ELECTRONIC COPY

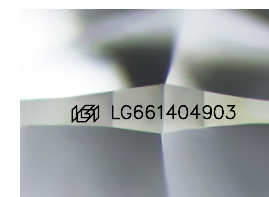
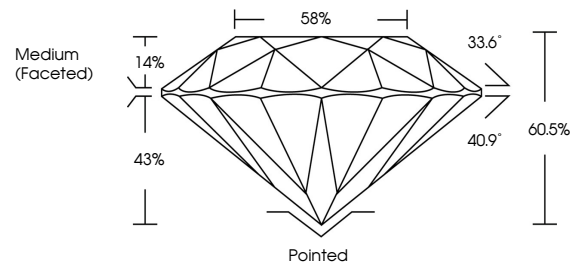
LG661404903
Report verification at igi.org



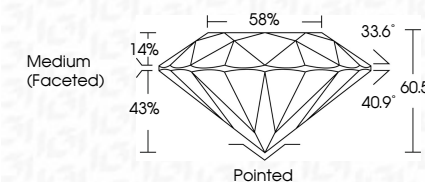
October 24, 2024
IGI Report Number **LG661404903**
Description **LABORATORY GROWN DIAMOND**
Shape and Cutting Style **ROUND BRILLIANT**
Measurements **6.73 - 6.76 X 4.08 MM**
GRADING RESULTS
Carat Weight **1.14 CARAT**
Color Grade **F**
Clarity Grade **SI 1**
Cut Grade **IDEAL**

October 24, 2024
IGI Report Number **LG661404903**
Description **LABORATORY GROWN DIAMOND**
Shape and Cutting Style **ROUND BRILLIANT**
Measurements **6.73 - 6.76 X 4.08 MM**
GRADING RESULTS
Carat Weight **1.14 CARAT**
Color Grade **F**
Clarity Grade **SI 1**
Cut Grade **IDEAL**

PROPORTIONS



Sample Image Used



ADDITIONAL GRADING INFORMATION

Polish **EXCELLENT**
Symmetry **EXCELLENT**
Fluorescence **NONE**
Inscription(s) **IGI LG661404903**

Comments: This Laboratory Grown Diamond was created by Chemical Vapor Deposition (CVD) growth process. Type IIa

ADDITIONAL GRADING INFORMATION

Polish **EXCELLENT**
Symmetry **EXCELLENT**
Fluorescence **NONE**
Inscription(s) **IGI LG661404903**
Comments: This Laboratory Grown Diamond was created by Chemical Vapor Deposition (CVD) growth process. Type IIa

COLOR

D E F G H I J Faint Very Light Light

CLARITY

IF	VS ¹⁻²	VS ¹⁻²	SI ¹⁻²	I ¹⁻³
Internally Flawless	Very Very Slightly Included	Very Slightly Included	Slightly Included	Included



IGI



October 24, 2024
IGI Report No **LG661404903**
ROUND BRILLIANT
6.73 - 6.76 X 4.08 MM
Carat Weight **1.14 CARAT**
Color Grade **F**
Clarity Grade **SI 1**
Depth **IDEAL**
Table **60.5%**
Girdle **88%**
Medium (Faceted)
Culet **Pointed**
Polish **EXCELLENT**
Symmetry **EXCELLENT**
Fluorescence **NONE**
Inscriptions(s) **IGI LG661404903**
Comments: This Laboratory Grown Diamond was created by Chemical Vapor Deposition (CVD) growth process. Type IIa