



ELECTRONIC COPY

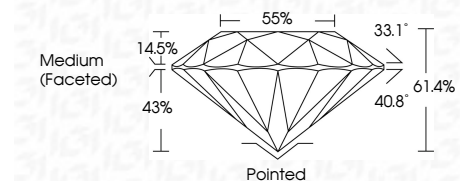
LG662403325
Report verification at igi.org



October 22, 2024
IGI Report Number LG662403325
Description LABORATORY GROWN DIAMOND
Shape and Cutting Style ROUND BRILLIANT
Measurements 9.28 - 9.34 X 5.72 MM

GRADING RESULTS

Carat Weight 3.03 CARATS
Color Grade F
Clarity Grade VVS 2
Cut Grade IDEAL



ADDITIONAL GRADING INFORMATION

Polish EXCELLENT
Symmetry EXCELLENT
Fluorescence NONE
Inscription(s) IGI LG662403325
Comments: This Laboratory Grown Diamond was created by Chemical Vapor Deposition (CVD) growth process. Type IIa



October 22, 2024
IGI Report No. LG662403325
ROUND BRILLIANT
9.28 - 9.34 X 5.72 MM
3.03 CARATS
F
VVS 2
IDEAL
61.4%
55%
Medium (Faceted)
Pointed
EXCELLENT
EXCELLENT
NONE
IGI LG662403325
Comments: This Laboratory Grown Diamond was created by Chemical Vapor Deposition (CVD) growth process. Type IIa

October 22, 2024
IGI Report Number LG662403325
Description LABORATORY GROWN DIAMOND
Shape and Cutting Style ROUND BRILLIANT
Measurements 9.28 - 9.34 X 5.72 MM

GRADING RESULTS

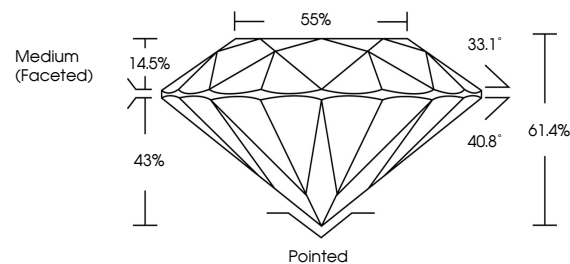
Carat Weight 3.03 CARATS
Color Grade F
Clarity Grade VVS 2
Cut Grade IDEAL

ADDITIONAL GRADING INFORMATION

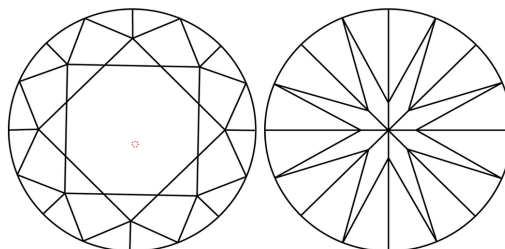
Polish EXCELLENT
Symmetry EXCELLENT
Fluorescence NONE
Inscription(s) IGI LG662403325

Comments: This Laboratory Grown Diamond was created by Chemical Vapor Deposition (CVD) growth process. Type IIa

PROPORTIONS

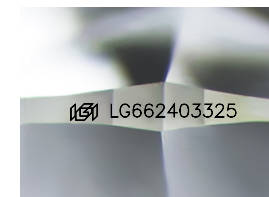


CLARITY CHARACTERISTICS



KEY TO SYMBOLS

Red symbols indicate internal characteristics.
Green symbols indicate external characteristics.



Sample Image Used

COLOR

D E F G H I J Faint Very Light Light

CLARITY

IF VS 1-2 VS 1-2 SI 1-2 I 1-3

Internally Flawless Very Very Slightly Included Very Slightly Included Slightly Included Included

