



ELECTRONIC COPY

LABORATORY GROWN DIAMOND REPORT

October 25, 2024  
IGI Report Number LG662407663  
Description LABORATORY GROWN DIAMOND  
Shape and Cutting Style CUT CORNERED RECTANGULAR MODIFIED BRILLIANT  
Measurements 11.01 X 7.62 X 5.38 MM

GRADING RESULTS

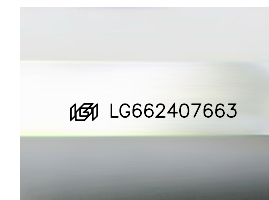
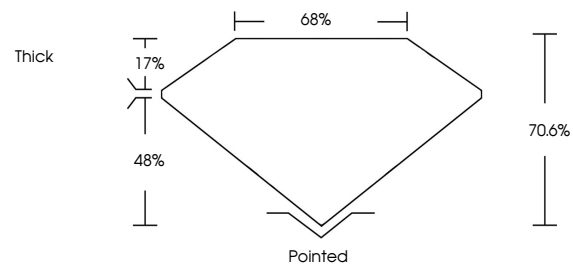
Carat Weight 4.40 CARATS  
Color Grade E  
Clarity Grade VVS 1

ADDITIONAL GRADING INFORMATION

Polish EXCELLENT  
Symmetry EXCELLENT  
Fluorescence NONE  
Inscription(s) IGI LG662407663

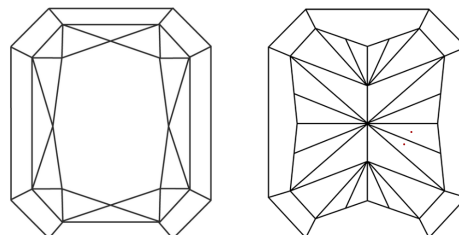
Comments: This Laboratory Grown Diamond was created by Chemical Vapor Deposition (CVD) growth process.  
Type IIa

PROPORTIONS



Sample Image Used

CLARITY CHARACTERISTICS



KEY TO SYMBOLS

Red symbols indicate internal characteristics.  
Green symbols indicate external characteristics.

COLOR

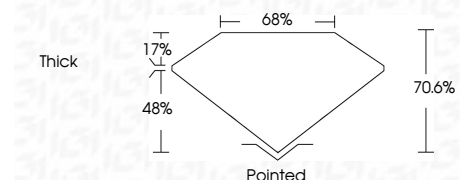
D E F G H I J Faint Very Light Light

CLARITY

IF VS 1-2 VS 1-2 SI 1-2 I 1-3  
Internally Flawless Very Very Slightly Included Very Slightly Included Slightly Included Included



October 25, 2024  
IGI Report Number LG662407663  
Description LABORATORY GROWN DIAMOND  
Shape and Cutting Style CUT CORNERED RECTANGULAR MODIFIED BRILLIANT  
Measurements 11.01 X 7.62 X 5.38 MM  
GRADING RESULTS  
Carat Weight 4.40 CARATS  
Color Grade E  
Clarity Grade VVS 1



ADDITIONAL GRADING INFORMATION

Polish EXCELLENT  
Symmetry EXCELLENT  
Fluorescence NONE  
Inscription(s) IGI LG662407663  
Comments: This Laboratory Grown Diamond was created by Chemical Vapor Deposition (CVD) growth process.  
Type IIa



October 25, 2024  
IGI Report No. LG662407663  
CUT CORNERED RECT. MODIFIED BRILLIANT  
11.01 X 7.62 X 5.38 MM  
4.40 CARATS  
E  
VVS 1  
70.6%  
68%  
Thick  
Pointed  
EXCELLENT  
EXCELLENT  
NONE  
IGI LG662407663  
Comments: This Laboratory Grown Diamond was created by Chemical Vapor Deposition (CVD) growth process.  
Type IIa