



ELECTRONIC COPY

LG662408579 Report verification at igi.org

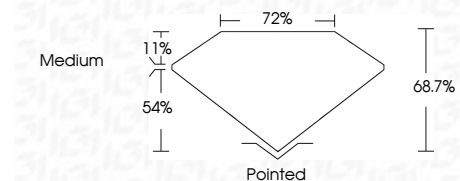


October 21, 2024 IGI Report Number LG662408579 Description LABORATORY GROWN DIAMOND Shape and Cutting Style CUT CORNERED RECTANGULAR MODIFIED BRILLIANT

Measurements 10.14 X 6.84 X 4.70 MM

GRADING RESULTS

Carat Weight 2.81 CARATS Color Grade E Clarity Grade VVS 2



ADDITIONAL GRADING INFORMATION

Polish EXCELLENT Symmetry EXCELLENT Fluorescence NONE Inscription(s) LG662408579 Comments: This Laboratory Grown Diamond was created by Chemical Vapor Deposition (CVD) growth process. Type IIa



October 21, 2024 IGI Report No LG662408579 CUT CORNERED RECT. MODIFIED BRILLIANT 10.14 X 6.84 X 4.70 MM 2.81 CARATS E VVS 2 68.7% 72% Medium Pointed EXCELLENT EXCELLENT NONE LG662408579

Comments: This Laboratory Grown Diamond was created by Chemical Vapor Deposition (CVD) growth process. Type IIa

October 21, 2024 IGI Report Number LG662408579 Description LABORATORY GROWN DIAMOND Shape and Cutting Style CUT CORNERED RECTANGULAR MODIFIED BRILLIANT Measurements 10.14 X 6.84 X 4.70 MM

GRADING RESULTS

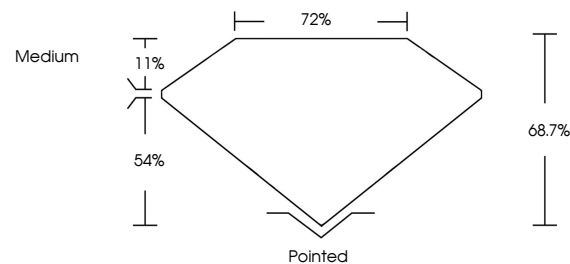
Carat Weight 2.81 CARATS Color Grade E Clarity Grade VVS 2

ADDITIONAL GRADING INFORMATION

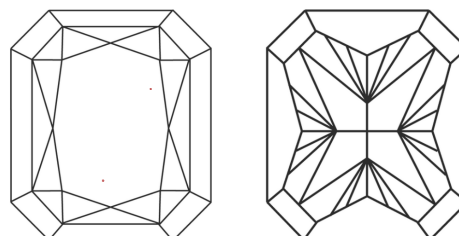
Polish EXCELLENT Symmetry EXCELLENT Fluorescence NONE Inscription(s) LG662408579

Comments: This Laboratory Grown Diamond was created by Chemical Vapor Deposition (CVD) growth process. Type IIa

PROPORTIONS

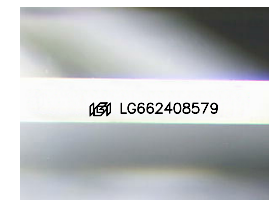


CLARITY CHARACTERISTICS



KEY TO SYMBOLS

Red symbols indicate internal characteristics. Green symbols indicate external characteristics.



Sample Image Used

COLOR

D E F G H I J Faint Very Light Light

CLARITY

IF VVS 1-2 VS 1-2 SI 1-2 I 1-3 Internally Flawless Very Very Slightly Included Very Slightly Included Slightly Included Included

