



ELECTRONIC COPY

LG662411347
Report verification at igi.org



October 24, 2024

IGI Report Number **LG662411347**

Description **LABORATORY GROWN DIAMOND**

Shape and Cutting Style **ROUND BRILLIANT**

Measurements **9.24 - 9.28 X 5.62 MM**

GRADING RESULTS

Carat Weight **3.00 CARATS**

Color Grade **G**

Clarity Grade **SI 2**

Cut Grade **IDEAL**

October 24, 2024

IGI Report Number **LG662411347**

Description **LABORATORY GROWN DIAMOND**

Shape and Cutting Style **ROUND BRILLIANT**

Measurements **9.24 - 9.28 X 5.62 MM**

GRADING RESULTS

Carat Weight **3.00 CARATS**

Color Grade **G**

Clarity Grade **SI 2**

Cut Grade **IDEAL**

ADDITIONAL GRADING INFORMATION

Polish **EXCELLENT**

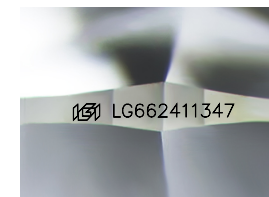
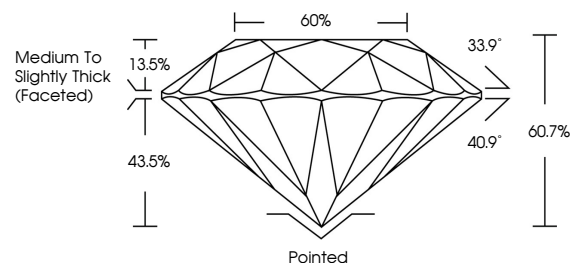
Symmetry **EXCELLENT**

Fluorescence **NONE**

Inscription(s) **IGI LG662411347**

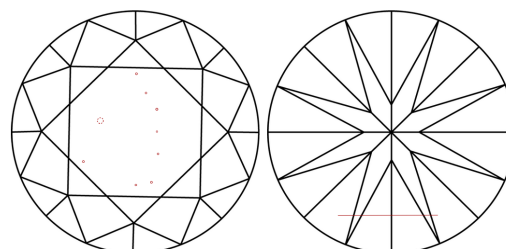
Comments: This Laboratory Grown Diamond was created by Chemical Vapor Deposition (CVD) growth process. Type IIa

PROPORTIONS



Sample Image Used

CLARITY CHARACTERISTICS



KEY TO SYMBOLS

Red symbols indicate internal characteristics.
Green symbols indicate external characteristics.

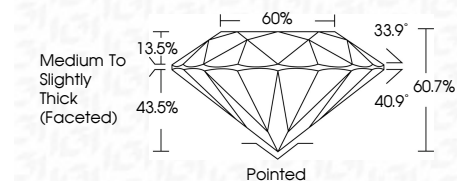
COLOR

D E F G H I J Faint Very Light Light

CLARITY

IF VS¹⁻² VS¹⁻² SI¹⁻² I¹⁻³

Internally Flawless Very Very Slightly Included Very Slightly Included Slightly Included Included



ADDITIONAL GRADING INFORMATION

Polish **EXCELLENT**

Symmetry **EXCELLENT**

Fluorescence **NONE**

Inscription(s) **IGI LG662411347**

Comments: This Laboratory Grown Diamond was created by Chemical Vapor Deposition (CVD) growth process. Type IIa



IGI



October 24, 2024
IGI Report No LG662411347
ROUND BRILLIANT

3.00 CARATS
Color Grade G
Clarity Grade SI 2
Depth IDEAL
Table 60.7%
Girdle 60%
Medium To Slightly Thick (Faceted)

Culet Pointed
Polish EXCELLENT
Symmetry EXCELLENT
Fluorescence NONE
Inscriptions(s) IGI LG662411347

Comments: This Laboratory Grown Diamond was created by Chemical Vapor Deposition (CVD) growth process. Type IIa