



**ELECTRONIC COPY**

LG662411783  
Report verification at [igi.org](http://igi.org)



October 24, 2024

IGI Report Number **LG662411783**

Description **LABORATORY GROWN DIAMOND**

Shape and Cutting Style **PRINCESS CUT**

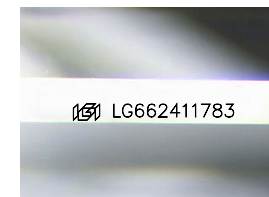
Measurements **7.35 X 7.24 X 5.01 MM**

**GRADING RESULTS**

Carat Weight **2.51 CARATS**

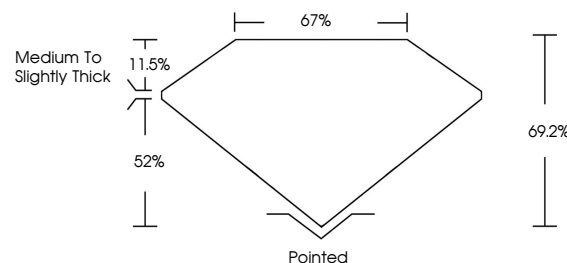
Color Grade **D**

Clarity Grade **VVS 2**

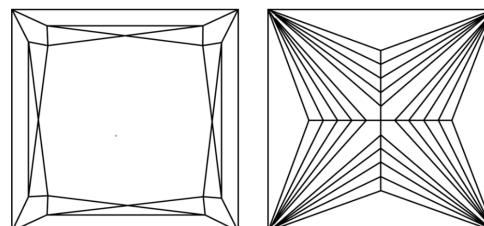


Sample Image Used

**PROPORTIONS**



**CLARITY CHARACTERISTICS**



**KEY TO SYMBOLS**

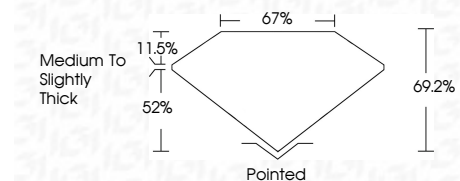
Red symbols indicate internal characteristics.  
Green symbols indicate external characteristics.

**COLOR**

D E F G H I J Faint Very Light Light

**CLARITY**

IF	VS <sup>1-2</sup>	VS <sup>1-2</sup>	SI <sup>1-2</sup>	I <sup>1-3</sup>
Internally Flawless	Very Very Slightly Included	Very Slightly Included	Slightly Included	Included



**ADDITIONAL GRADING INFORMATION**

Polish **EXCELLENT**

Symmetry **EXCELLENT**

Fluorescence **NONE**

Inscription(s) **IGI LG662411783**

Comments: This Laboratory Grown Diamond was created by Chemical Vapor Deposition (CVD) growth process.  
Type IIa



**IGI**



October 24, 2024  
IGI Report No. LG662411783  
PRINCESS CUT

7.35 X 7.24 X 5.01 MM  
2.51 CARATS  
D  
VVS 2  
69.2%  
67%  
Medium to Slightly Thick  
Pointed  
EXCELLENT  
EXCELLENT  
NONE  
IGI LG662411783

Comments: This Laboratory Grown Diamond was created by Chemical Vapor Deposition (CVD) growth process.  
Type IIa