



ELECTRONIC COPY

LG662411787
Report verification at igi.org



October 24, 2024

IGI Report Number **LG662411787**

Description **LABORATORY GROWN DIAMOND**

Shape and Cutting Style **PRINCESS CUT**

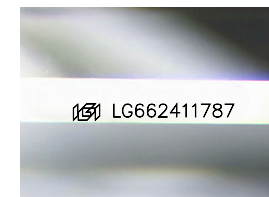
Measurements **7.53 X 7.19 X 4.73 MM**

GRADING RESULTS

Carat Weight **2.28 CARATS**

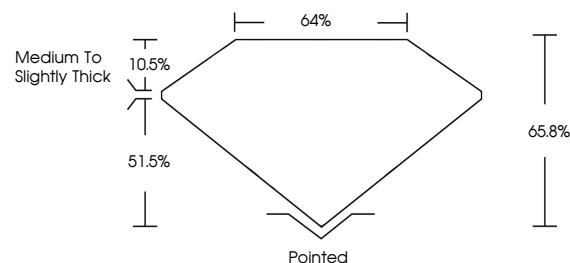
Color Grade **D**

Clarity Grade **VVS 1**

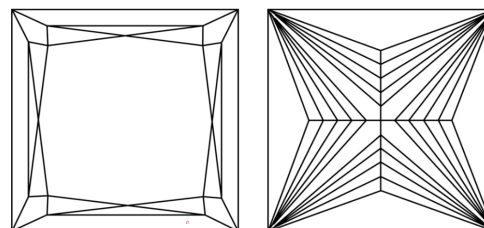


Sample Image Used

PROPORTIONS



CLARITY CHARACTERISTICS



KEY TO SYMBOLS

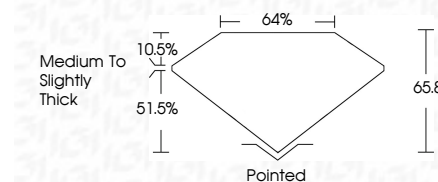
Red symbols indicate internal characteristics.
Green symbols indicate external characteristics.

COLOR

D E F G H I J Faint Very Light Light

CLARITY

IF	VS ¹⁻²	VS ¹⁻²	SI ¹⁻²	I ¹⁻³
Internally Flawless	Very Very Slightly Included	Very Slightly Included	Slightly Included	Included



ADDITIONAL GRADING INFORMATION

Polish **EXCELLENT**

Symmetry **EXCELLENT**

Fluorescence **NONE**

Inscription(s) **IGI LG662411787**

Comments: This Laboratory Grown Diamond was created by Chemical Vapor Deposition (CVD) growth process.
Type IIa



IGI



October 24, 2024	IGI Report No. LG662411787	PRINCESS CUT	2.28 CARATS	D	VVS 1	65.8%	64%	Medium to Slightly Thick	Pointed	EXCELLENT	EXCELLENT	NONE	IGI LG662411787
7.53 X 7.19 X 4.73 MM	Carat Weight	Color Grade	Clarity Grade	Table	Depth	Girdle	Culet	Polish	Symmetry	Fluorescence	Inscription(s)	Comments: This Laboratory Grown Diamond was created by Chemical Vapor Deposition (CVD) growth process. Type IIa	