



ELECTRONIC COPY

LG662418227
Report verification at igi.org



October 26, 2024

IGI Report Number **LG662418227**

Description **LABORATORY GROWN DIAMOND**

Shape and Cutting Style **CUT CORNERED
RECTANGULAR MODIFIED
BRILLIANT**

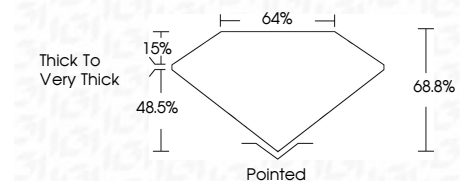
Measurements **9.04 X 6.56 X 4.51 MM**

GRADING RESULTS

Carat Weight **2.39 CARATS**

Color Grade **D**

Clarity Grade **VVS 2**



ADDITIONAL GRADING INFORMATION

Polish **EXCELLENT**

Symmetry **EXCELLENT**

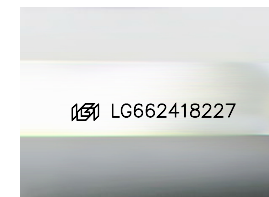
Fluorescence **NONE**

Inscription(s) **IGI LG662418227**

Comments: This Laboratory Grown Diamond was created by Chemical Vapor Deposition (CVD) growth process. Type IIa

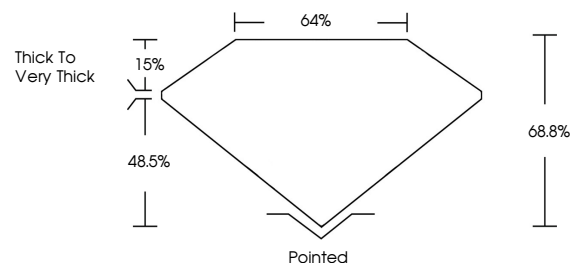


IGI

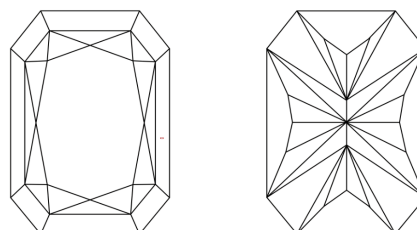


Sample Image Used

PROPORTIONS



CLARITY CHARACTERISTICS



KEY TO SYMBOLS

Red symbols indicate internal characteristics.
Green symbols indicate external characteristics.

COLOR

D E F G H I J Faint Very Light Light

CLARITY

IF VS¹⁻² VS¹⁻² SI¹⁻² I¹⁻³

Internally Flawless Very Very Slightly Included Very Slightly Included Slightly Included Included

October 26, 2024
IGI Report No. LG662418227
CUT CORNERED RECT. MODIFIED BRILLIANT
9.04 X 6.56 X 4.51 MM
2.39 CARATS
D
VVS 2
68.8%
48.5%
64%
Thick To Very Thick
Pointed
EXCELLENT
EXCELLENT
NONE
IGI LG662418227

Comments: This Laboratory Grown Diamond was created by Chemical Vapor Deposition (CVD) growth process. Type IIa

