



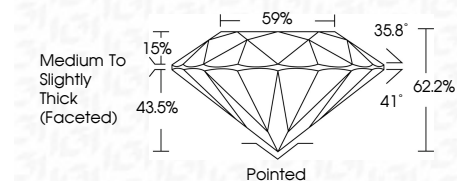
ELECTRONIC COPY

LG662421351 Report verification at igi.org



October 25, 2024 IGI Report Number LG662421351 Description LABORATORY GROWN DIAMOND Shape and Cutting Style ROUND BRILLIANT Measurements 6.78 - 6.81 X 4.23 MM

GRADING RESULTS Carat Weight 1.22 CARAT Color Grade D Clarity Grade VVS 1 Cut Grade IDEAL



ADDITIONAL GRADING INFORMATION Polish EXCELLENT Symmetry EXCELLENT Fluorescence NONE Inscription(s) IGI LG662421351 Comments: As Grown - No indication of post-growth treatment. This Laboratory Grown Diamond was created by High Pressure High Temperature (HPHT) growth process. Type II



October 25, 2024 IGI Report No LG662421351 ROUND BRILLIANT 6.78 - 6.81 X 4.23 MM 1.22 CARAT D VVS 1 IDEAL 62.2% 15% Medium To Slightly Thick (Faceted) Pointed EXCELLENT EXCELLENT NONE IGI LG662421351

LABORATORY GROWN DIAMOND REPORT

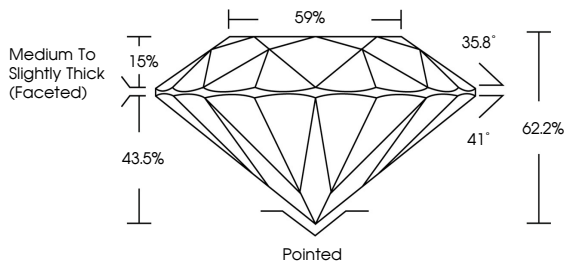
October 25, 2024 IGI Report Number LG662421351 Description LABORATORY GROWN DIAMOND Shape and Cutting Style ROUND BRILLIANT Measurements 6.78 - 6.81 X 4.23 MM

GRADING RESULTS Carat Weight 1.22 CARAT Color Grade D Clarity Grade VVS 1 Cut Grade IDEAL

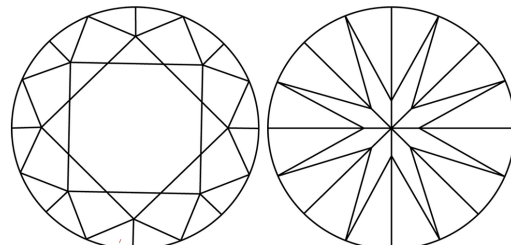
ADDITIONAL GRADING INFORMATION Polish EXCELLENT Symmetry EXCELLENT Fluorescence NONE Inscription(s) IGI LG662421351

Comments: As Grown - No indication of post-growth treatment. This Laboratory Grown Diamond was created by High Pressure High Temperature (HPHT) growth process. Type II

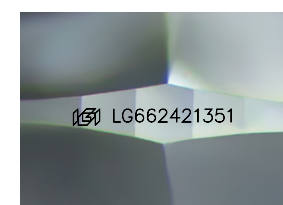
PROPORTIONS



CLARITY CHARACTERISTICS



KEY TO SYMBOLS Red symbols indicate internal characteristics. Green symbols indicate external characteristics.



Sample Image Used

COLOR scale from D to J, with Very Light and Light categories.

CLARITY scale from IF to I 1-3, with sub-categories like Very Very Slightly Included.

