



ELECTRONIC COPY

LG662422505
Report verification at igi.org



October 25, 2024
IGI Report Number **LG662422505**

Description **LABORATORY GROWN DIAMOND**

Shape and Cutting Style **CUT CORNERED
RECTANGULAR MODIFIED
BRILLIANT**

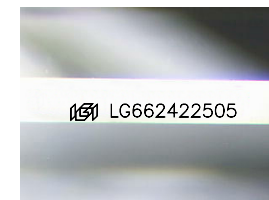
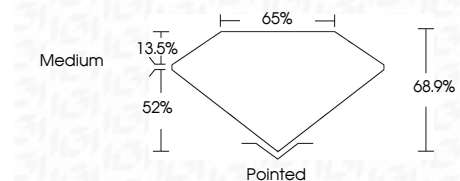
Measurements **9.84 X 6.68 X 4.60 MM**

GRADING RESULTS

Carat Weight **2.59 CARATS**

Color Grade **G**

Clarity Grade **VVS 2**



Sample Image Used

ADDITIONAL GRADING INFORMATION

Polish **EXCELLENT**

Symmetry **EXCELLENT**

Fluorescence **NONE**

Inscription(s) **IGI LG662422505**

Comments: This Laboratory Grown Diamond was created by Chemical Vapor Deposition (CVD) growth process. Type IIa



IGI

October 25, 2024
IGI Report No. LG662422505
CUT CORNERED RECT. MODIFIED BRILLIANT
9.84 X 6.68 X 4.60 MM
2.59 CARATS
G
VVS 2
68.9%
65%
Medium
Pointed
EXCELLENT
EXCELLENT
NONE
IGI LG662422505
Comments: This Laboratory Grown Diamond was created by Chemical Vapor Deposition (CVD) growth process. Type IIa

LABORATORY GROWN DIAMOND REPORT

October 25, 2024

IGI Report Number **LG662422505**

Description **LABORATORY GROWN DIAMOND**

Shape and Cutting Style **CUT CORNERED RECTANGULAR
MODIFIED BRILLIANT**

Measurements **9.84 X 6.68 X 4.60 MM**

GRADING RESULTS

Carat Weight **2.59 CARATS**

Color Grade **G**

Clarity Grade **VVS 2**

ADDITIONAL GRADING INFORMATION

Polish **EXCELLENT**

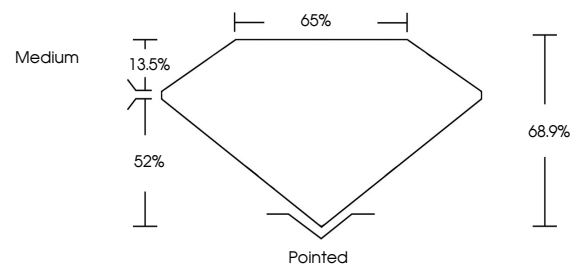
Symmetry **EXCELLENT**

Fluorescence **NONE**

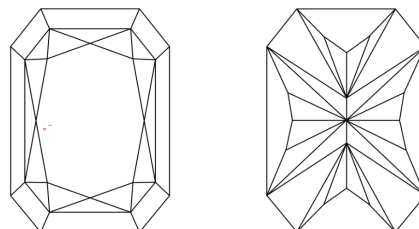
Inscription(s) **IGI LG662422505**

Comments: This Laboratory Grown Diamond was created by Chemical Vapor Deposition (CVD) growth process. Type IIa

PROPORTIONS



CLARITY CHARACTERISTICS



KEY TO SYMBOLS

Red symbols indicate internal characteristics.
Green symbols indicate external characteristics.

COLOR

D E F G H I J Faint Very Light Light

CLARITY

IF VS¹⁻² VS¹⁻² SI¹⁻² I¹⁻³

Internally Flawless Very Very Slightly Included Very Slightly Included Slightly Included Included

