



**ELECTRONIC COPY**

LG662422560  
Report verification at [igi.org](http://igi.org)



October 24, 2024

IGI Report Number **LG662422560**

Description **LABORATORY GROWN DIAMOND**

Shape and Cutting Style **PRINCESS CUT**

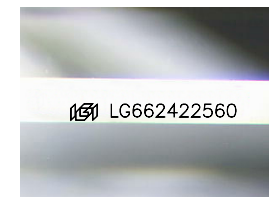
Measurements **5.82 X 5.75 X 3.92 MM**

**GRADING RESULTS**

Carat Weight **1.15 CARAT**

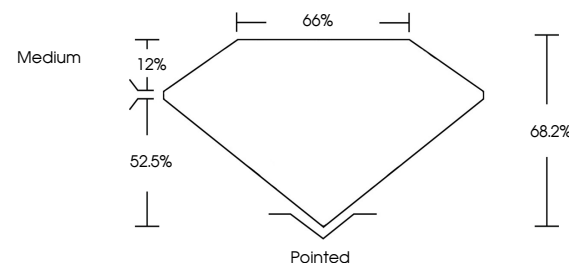
Color Grade **E**

Clarity Grade **VVS 2**

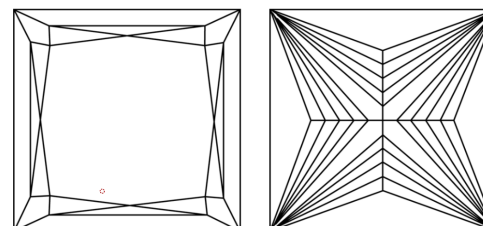


Sample Image Used

**PROPORTIONS**



**CLARITY CHARACTERISTICS**



**KEY TO SYMBOLS**

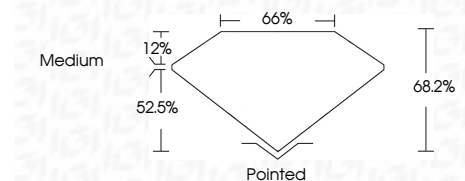
Red symbols indicate internal characteristics.  
Green symbols indicate external characteristics.

**COLOR**

D E F G H I J Faint Very Light Light

**CLARITY**

IF	VS <sup>1-2</sup>	VS <sup>1-2</sup>	SI <sup>1-2</sup>	I <sup>1-3</sup>
Internally Flawless	Very Very Slightly Included	Very Slightly Included	Slightly Included	Included



**ADDITIONAL GRADING INFORMATION**

Polish **EXCELLENT**

Symmetry **EXCELLENT**

Fluorescence **NONE**

Inscription(s) **IGI LG662422560**

Comments: This Laboratory Grown Diamond was created by Chemical Vapor Deposition (CVD) growth process.  
Type IIa



**IGI**



October 24, 2024  
IGI Report No. **LG662422560**  
**PRINCESS CUT**

**1.15 CARAT**  
E

**5.82 X 5.75 X 3.92 MM**

**VVS 2**  
68.2%  
52.5%

**Medium**

**Pointed**  
**EXCELLENT**  
**EXCELLENT**  
**NONE**  
**IGI LG662422560**

Comments: This Laboratory Grown Diamond was created by Chemical Vapor Deposition (CVD) growth process.  
Type IIa