



ELECTRONIC COPY

LG662422597
Report verification at igi.org



October 26, 2024

IGI Report Number **LG662422597**

Description **LABORATORY GROWN DIAMOND**

Shape and Cutting Style **CUT CORNERED
RECTANGULAR MODIFIED
BRILLIANT**

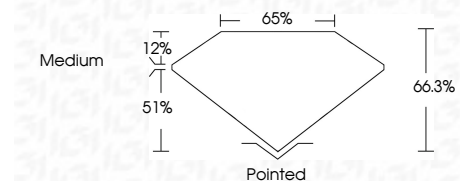
Measurements **10.01 X 6.71 X 4.45 MM**

GRADING RESULTS

Carat Weight **2.59 CARATS**

Color Grade **F**

Clarity Grade **VVS 1**



ADDITIONAL GRADING INFORMATION

Polish **EXCELLENT**

Symmetry **EXCELLENT**

Fluorescence **NONE**

Inscription(s) **IGI LG662422597**

Comments: This Laboratory Grown Diamond was created by Chemical Vapor Deposition (CVD) growth process. Type IIa



IGI

October 26, 2024	IGI Report No. LG662422597	CUT CORNERED RECT. MODIFIED BRILLIANT	10.01 X 6.71 X 4.45 MM	2.59 CARATS	F	VVS 1	66.3%	51%	Medium	Pointed	EXCELLENT	EXCELLENT	NONE	IGI LG662422597
Color Grade	Carat Weight	Depth	Table	Grades	Culet	Polish	Symmetry	Fluorescence	Inscription(s)	Comments: This Laboratory Grown Diamond was created by Chemical Vapor Deposition (CVD) growth process. Type IIa				

LABORATORY GROWN DIAMOND REPORT

October 26, 2024

IGI Report Number **LG662422597**

Description **LABORATORY GROWN DIAMOND**

Shape and Cutting Style **CUT CORNERED RECTANGULAR
MODIFIED BRILLIANT**

Measurements **10.01 X 6.71 X 4.45 MM**

GRADING RESULTS

Carat Weight **2.59 CARATS**

Color Grade **F**

Clarity Grade **VVS 1**

ADDITIONAL GRADING INFORMATION

Polish **EXCELLENT**

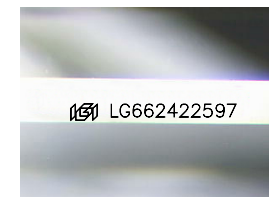
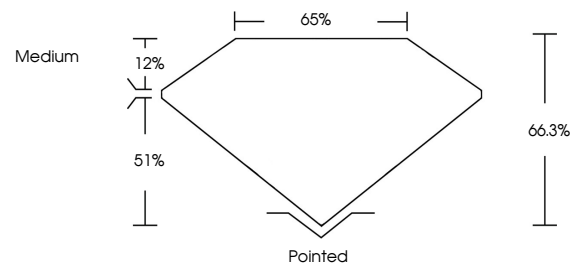
Symmetry **EXCELLENT**

Fluorescence **NONE**

Inscription(s) **IGI LG662422597**

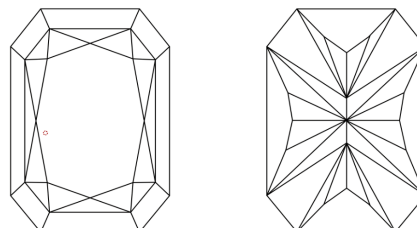
Comments: This Laboratory Grown Diamond was created by Chemical Vapor Deposition (CVD) growth process. Type IIa

PROPORTIONS



Sample Image Used

CLARITY CHARACTERISTICS



KEY TO SYMBOLS

Red symbols indicate internal characteristics.
Green symbols indicate external characteristics.

COLOR

D E F G H I J Faint Very Light Light

CLARITY

IF VVS¹⁻² VS¹⁻² SI¹⁻² I¹⁻³

Internally Flawless Very Very Slightly Included Very Slightly Included Slightly Included Included

