



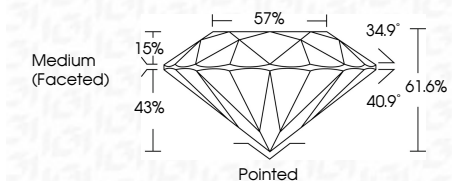
ELECTRONIC COPY

LG662422818
Report verification at igi.org



October 25, 2024
IGI Report Number LG662422818
Description LABORATORY GROWN DIAMOND
Shape and Cutting Style ROUND BRILLIANT
Measurements 11.01 - 11.06 X 6.79 MM

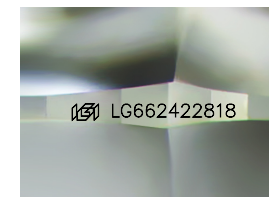
GRADING RESULTS
Carat Weight 5.08 CARATS
Color Grade D
Clarity Grade VS 2
Cut Grade IDEAL



ADDITIONAL GRADING INFORMATION
Polish EXCELLENT
Symmetry EXCELLENT
Fluorescence NONE
Inscription(s) IGI LG662422818
Comments: HEARTS & ARROWS
This Laboratory Grown Diamond was created by Chemical Vapor Deposition (CVD) growth process. Type IIa

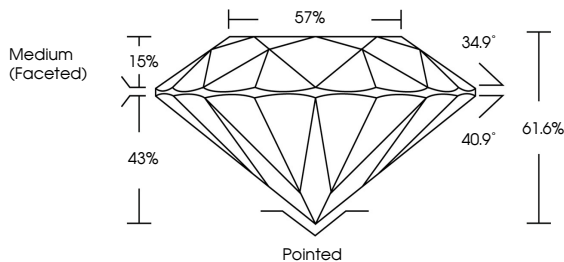


October 25, 2024
IGI Report No LG662422818
ROUND BRILLIANT
5.08 CARATS
D
VS 2
IDEAL
61.6%
57%
Medium (Faceted)
Pointed
EXCELLENT
EXCELLENT
NONE
IGI LG662422818
Comments: HEARTS & ARROWS
This Laboratory Grown Diamond was created by Chemical Vapor Deposition (CVD) growth process. Type IIa

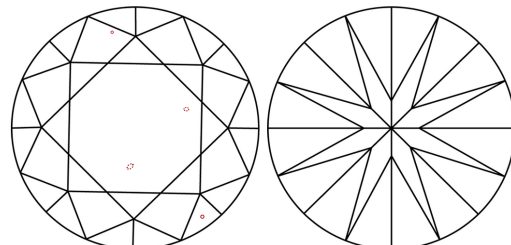


Sample Image Used

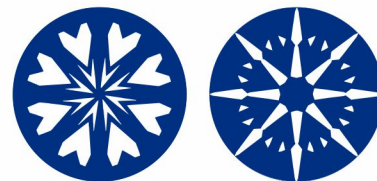
PROPORTIONS



CLARITY CHARACTERISTICS



KEY TO SYMBOLS
Red symbols indicate internal characteristics.
Green symbols indicate external characteristics.



COLOR

Color scale table with categories D, E, F, G, H, I, J, Faint, Very Light, Light.

CLARITY

Clarity scale table with categories IF, VS 1-2, V 1-2, SI 1-2, I 1-3, Internally Flawless, Very Very Slightly Included, Very Slightly Included, Slightly Included, Included.



October 25, 2024
IGI Report Number LG662422818
Description LABORATORY GROWN DIAMOND
Shape and Cutting Style ROUND BRILLIANT
Measurements 11.01 - 11.06 X 6.79 MM

GRADING RESULTS
Carat Weight 5.08 CARATS
Color Grade D
Clarity Grade VS 2
Cut Grade IDEAL

ADDITIONAL GRADING INFORMATION
Polish EXCELLENT
Symmetry EXCELLENT
Fluorescence NONE
Inscription(s) IGI LG662422818

Comments: HEARTS & ARROWS
This Laboratory Grown Diamond was created by Chemical Vapor Deposition (CVD) growth process. Type IIa