



ELECTRONIC COPY

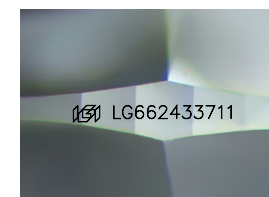
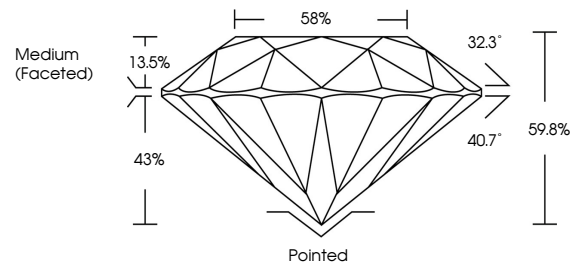
LG662433711
Report verification at igi.org



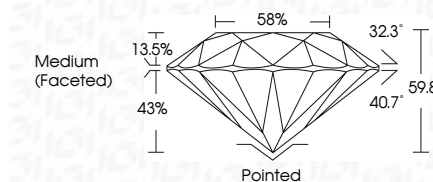
October 26, 2024
IGI Report Number LG662433711
Description LABORATORY GROWN DIAMOND
Shape and Cutting Style ROUND BRILLIANT
Measurements 10.28 - 10.34 X 6.16 MM
GRADING RESULTS
Carat Weight 4.01 CARATS
Color Grade E
Clarity Grade VS 2
Cut Grade EXCELLENT

October 26, 2024
IGI Report Number LG662433711
Description LABORATORY GROWN DIAMOND
Shape and Cutting Style ROUND BRILLIANT
Measurements 10.28 - 10.34 X 6.16 MM
GRADING RESULTS
Carat Weight 4.01 CARATS
Color Grade E
Clarity Grade VS 2
Cut Grade EXCELLENT

PROPORTIONS



Sample Image Used



ADDITIONAL GRADING INFORMATION

Polish EXCELLENT
Symmetry EXCELLENT
Fluorescence NONE
Inscription(s) IGI LG662433711

Comments: This Laboratory Grown Diamond was created by Chemical Vapor Deposition (CVD) growth process. Type IIa

ADDITIONAL GRADING INFORMATION

Polish EXCELLENT
Symmetry EXCELLENT
Fluorescence NONE
Inscription(s) IGI LG662433711
Comments: This Laboratory Grown Diamond was created by Chemical Vapor Deposition (CVD) growth process. Type IIa

COLOR

D E F G H I J Faint Very Light Light

CLARITY

IF WS 1-2 VS 1-2 SI 1-2 I 1-3
Internally Flawless Very Very Slightly Included Very Slightly Included Slightly Included Included



IGI



Summary of report details including date, report number, description, measurements, grading results, and additional information.