



ELECTRONIC COPY

LG662443717
Report verification at igi.org



October 24, 2024

IGI Report Number **LG662443717**

Description **LABORATORY GROWN DIAMOND**

Shape and Cutting Style **PEAR BRILLIANT**

Measurements **14.41 X 8.73 X 5.39 MM**

GRADING RESULTS

Carat Weight **3.90 CARATS**

Color Grade **E**

Clarity Grade **VS 2**

October 24, 2024
IGI Report Number **LG662443717**
Description **LABORATORY GROWN DIAMOND**
Shape and Cutting Style **PEAR BRILLIANT**
Measurements **14.41 X 8.73 X 5.39 MM**

GRADING RESULTS

Carat Weight **3.90 CARATS**

Color Grade **E**

Clarity Grade **VS 2**

ADDITIONAL GRADING INFORMATION

Polish **EXCELLENT**

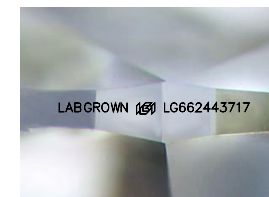
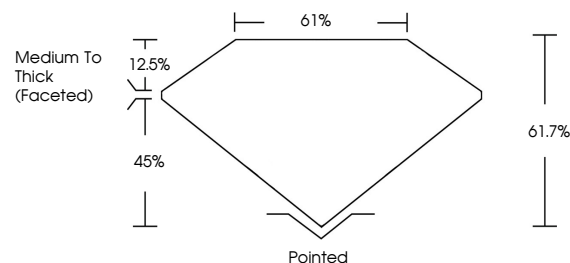
Symmetry **EXCELLENT**

Fluorescence **NONE**

Inscription(s) **LABGROWN (IGI) LG662443717**

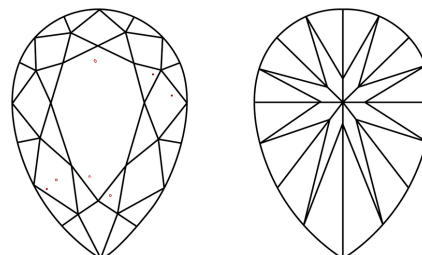
Comments: This Laboratory Grown Diamond was created by Chemical Vapor Deposition (CVD) growth process.
Type IIa

PROPORTIONS



Sample Image Used

CLARITY CHARACTERISTICS



KEY TO SYMBOLS

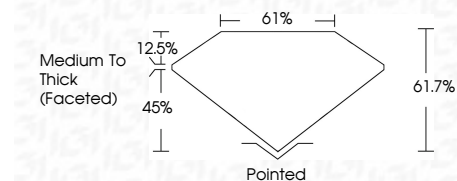
Red symbols indicate internal characteristics.
Green symbols indicate external characteristics.

COLOR

D E F G H I J Faint Very Light Light

CLARITY

IF	WS ¹⁻²	VS ¹⁻²	SI ¹⁻²	I ¹⁻³
Internally Flawless	Very Very Slightly Included	Very Slightly Included	Slightly Included	Included



ADDITIONAL GRADING INFORMATION

Polish **EXCELLENT**

Symmetry **EXCELLENT**

Fluorescence **NONE**

Inscription(s) **LABGROWN (IGI) LG662443717**

Comments: This Laboratory Grown Diamond was created by Chemical Vapor Deposition (CVD) growth process.
Type IIa



October 24, 2024
IGI Report No. **LG662443717**
PEAR BRILLIANT

3.90 CARATS
E

14.41 X 8.73 X 5.39 MM
Color Grade **E**
Depth **45%**
Table **12.5%**
Girdle **Medium To Thick (Faceted)**

VS 2
61.7%
61%
Pointed

Culet **EXCELLENT**
Polish **EXCELLENT**
Symmetry **EXCELLENT**
Fluorescence **NONE**
Inscription(s) **LABGROWN (IGI) LG662443717**

Comments: This Laboratory Grown Diamond was created by Chemical Vapor Deposition (CVD) growth process.
Type IIa