



ELECTRONIC COPY

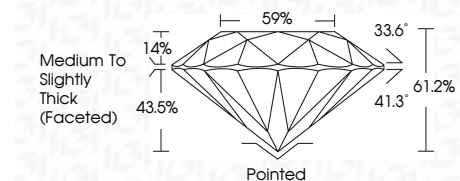
LG662445643
Report verification at igi.org



October 28, 2024
IGI Report Number **LG662445643**
Description **LABORATORY GROWN DIAMOND**
Shape and Cutting Style **ROUND BRILLIANT**
Measurements **8.76 - 8.78 X 5.37 MM**

GRADING RESULTS

Carat Weight **2.54 CARATS**
Color Grade **F**
Clarity Grade **VS 1**
Cut Grade **IDEAL**

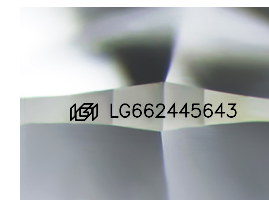


ADDITIONAL GRADING INFORMATION

Polish **EXCELLENT**
Symmetry **EXCELLENT**
Fluorescence **NONE**
Inscription(s) **IGI LG662445643**
Comments: This Laboratory Grown Diamond was created by Chemical Vapor Deposition (CVD) growth process. Type IIa

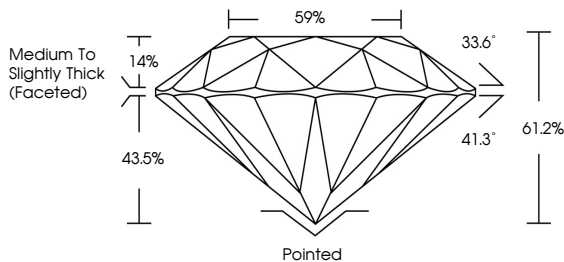


October 28, 2024
IGI Report No. LG662445643
ROUND BRILLIANT
8.76 - 8.78 X 5.37 MM
2.54 CARATS
Color Grade **F**
Clarity Grade **VS 1**
Cut Grade **IDEAL**
Depth **61.2%**
Table **14%**
Girdle **Medium To Slightly Thick (Faceted)**
Culet **Pointed**
Polish **EXCELLENT**
Symmetry **EXCELLENT**
Fluorescence **NONE**
Inscription(s) **IGI LG662445643**
Comments: This Laboratory Grown Diamond was created by Chemical Vapor Deposition (CVD) growth process. Type IIa

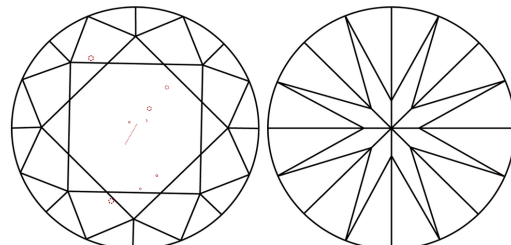


Sample Image Used

PROPORTIONS



CLARITY CHARACTERISTICS



KEY TO SYMBOLS

Red symbols indicate internal characteristics.
Green symbols indicate external characteristics.

COLOR

D	E	F	G	H	I	J	Faint	Very Light	Light
---	---	---	---	---	---	---	-------	------------	-------

CLARITY

IF	VS ¹⁻²	VS ¹⁻²	SI ¹⁻²	I ¹⁻³
Internally Flawless	Very Very Slightly Included	Very Slightly Included	Slightly Included	Included

