



ELECTRONIC COPY

LG662465155
Report verification at igi.org



November 15, 2024

IGI Report Number **LG662465155**

Description **LABORATORY GROWN DIAMOND**

Shape and Cutting Style **EMERALD CUT**

Measurements **10.10 X 6.66 X 4.52 MM**

GRADING RESULTS

Carat Weight **3.13 CARATS**

Color Grade **D**

Clarity Grade **VVS 1**

LABORATORY GROWN DIAMOND REPORT

November 15, 2024

IGI Report Number **LG662465155**

Description **LABORATORY GROWN DIAMOND**

Shape and Cutting Style **EMERALD CUT**

Measurements **10.10 X 6.66 X 4.52 MM**

GRADING RESULTS

Carat Weight **3.13 CARATS**

Color Grade **D**

Clarity Grade **VVS 1**

ADDITIONAL GRADING INFORMATION

Polish **EXCELLENT**

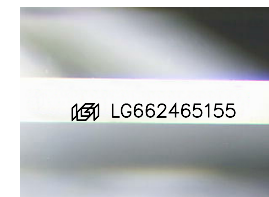
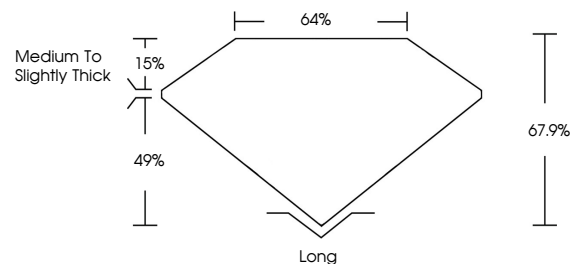
Symmetry **EXCELLENT**

Fluorescence **NONE**

Inscription(s) **IGI LG662465155**

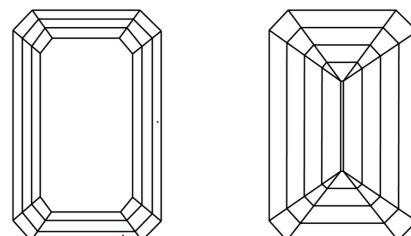
Comments: This Laboratory Grown Diamond was created by Chemical Vapor Deposition (CVD) growth process. Type IIa

PROPORTIONS



Sample Image Used

CLARITY CHARACTERISTICS



KEY TO SYMBOLS

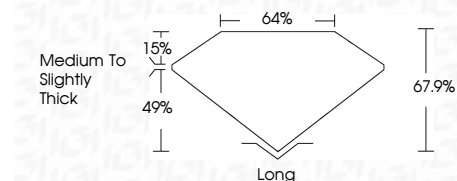
Red symbols indicate internal characteristics.
Green symbols indicate external characteristics.

COLOR

D E F G H I J Faint Very Light Light

CLARITY

IF	VS ¹⁻²	VS ¹⁻²	SI ¹⁻²	I ¹⁻³
Internally Flawless	Very Very Slightly Included	Very Slightly Included	Slightly Included	Included



ADDITIONAL GRADING INFORMATION

Polish **EXCELLENT**

Symmetry **EXCELLENT**

Fluorescence **NONE**

Inscription(s) **IGI LG662465155**

Comments: This Laboratory Grown Diamond was created by Chemical Vapor Deposition (CVD) growth process. Type IIa



IGI



November 15, 2024
IGI Report No LG662465155
EMERALD CUT

3.13 CARATS
D

10.10 X 6.66 X 4.52 MM

Carat Weight
Color Grade
Clarity Grade
Table
Girdle
Culet
Polish
Symmetry
Fluorescence
Inscription(s)

3.13 CARATS
D
VVS 1
67.9%
49%
64%
Medium to Slightly Thick
Long
EXCELLENT
EXCELLENT
NONE
IGI LG662465155

Comments: This Laboratory Grown Diamond was created by Chemical Vapor Deposition (CVD) growth process. Type IIa