



ELECTRONIC COPY

LG662467717
Report verification at igi.org



October 26, 2024

IGI Report Number **LG662467717**

Description **LABORATORY GROWN DIAMOND**

Shape and Cutting Style **ROUND BRILLIANT**

Measurements **7.02 - 7.06 X 4.34 MM**

GRADING RESULTS

Carat Weight **1.32 CARAT**

Color Grade **F**

Clarity Grade **SI 1**

Cut Grade **IDEAL**

October 26, 2024

IGI Report Number **LG662467717**

Description **LABORATORY GROWN DIAMOND**

Shape and Cutting Style **ROUND BRILLIANT**

Measurements **7.02 - 7.06 X 4.34 MM**

GRADING RESULTS

Carat Weight **1.32 CARAT**

Color Grade **F**

Clarity Grade **SI 1**

Cut Grade **IDEAL**

ADDITIONAL GRADING INFORMATION

Polish **EXCELLENT**

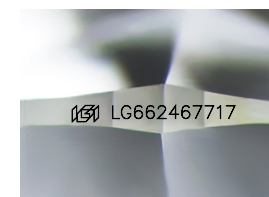
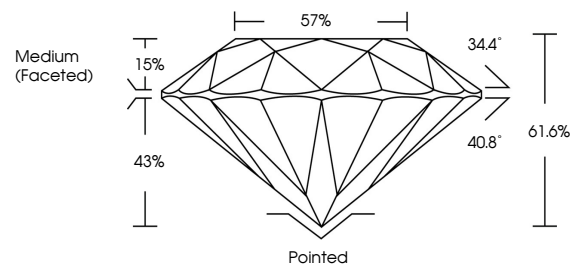
Symmetry **EXCELLENT**

Fluorescence **NONE**

Inscription(s) **IGI LG662467717**

Comments: This Laboratory Grown Diamond was created by Chemical Vapor Deposition (CVD) growth process. Type IIa

PROPORTIONS



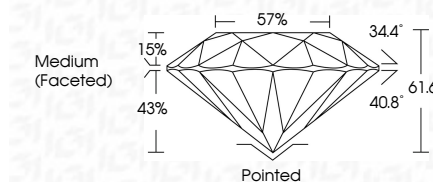
Sample Image Used

COLOR

D E F G H I J Faint Very Light Light

CLARITY

IF	VS ¹⁻²	VS ¹⁻²	SI ¹⁻²	I ¹⁻³
Internally Flawless	Very Very Slightly Included	Very Slightly Included	Slightly Included	Included



ADDITIONAL GRADING INFORMATION

Polish **EXCELLENT**

Symmetry **EXCELLENT**

Fluorescence **NONE**

Inscription(s) **IGI LG662467717**

Comments: This Laboratory Grown Diamond was created by Chemical Vapor Deposition (CVD) growth process. Type IIa



IGI



October 26, 2024
IGI Report No LG662467717
ROUND BRILLIANT

1.32 CARAT
F

7.02 - 7.06 X 4.34 MM

SI 1
IDEAL

61.6%
57%

Medium (Faceted)

Pointed
EXCELLENT
EXCELLENT
NONE

IGI LG662467717

Comments: This Laboratory Grown Diamond was created by Chemical Vapor Deposition (CVD) growth process. Type IIa