



**ELECTRONIC COPY**

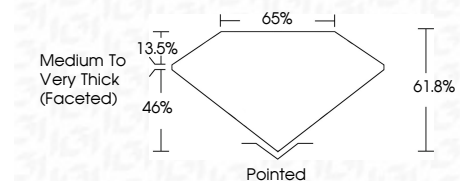
LG662472418  
Report verification at igi.org



November 7, 2024  
IGI Report Number **LG662472418**  
Description **LABORATORY GROWN DIAMOND**  
Shape and Cutting Style **SQUARE CUSHION BRILLIANT**  
Measurements **8.69 X 8.64 X 5.34 MM**

**GRADING RESULTS**

Carat Weight **3.52 CARATS**  
Color Grade **E**  
Clarity Grade **VS 2**

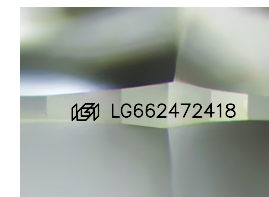


**ADDITIONAL GRADING INFORMATION**

Polish **EXCELLENT**  
Symmetry **EXCELLENT**  
Fluorescence **NONE**  
Inscription(s) **IGI LG662472418**  
Comments: This Laboratory Grown Diamond was created by Chemical Vapor Deposition (CVD) growth process. Type IIa

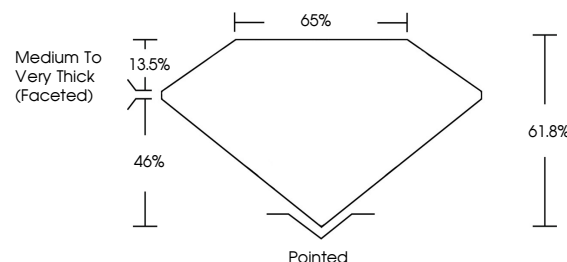


November 7, 2024  
IGI Report No **LG662472418**  
**SQUARE CUSHION BRILLIANT**  
**8.69 X 8.64 X 5.34 MM**  
Carat Weight **3.52 CARATS**  
Color Grade **E**  
Clarity Grade **VS 2**  
Depth **61.8%**  
Table **46%**  
Girdle **Medium to Very Thick (Faceted)**  
Culet **Pointed**  
Polish **EXCELLENT**  
Symmetry **EXCELLENT**  
Fluorescence **NONE**  
Inscription(s) **IGI LG662472418**  
Comments: This Laboratory Grown Diamond was created by Chemical Vapor Deposition (CVD) growth process. Type IIa

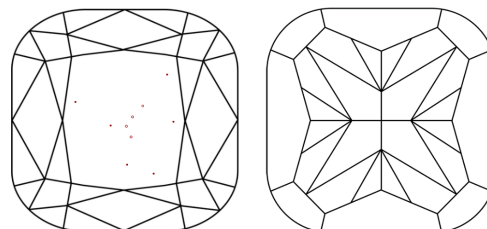


Sample Image Used

**PROPORTIONS**



**CLARITY CHARACTERISTICS**



**KEY TO SYMBOLS**

Red symbols indicate internal characteristics.  
Green symbols indicate external characteristics.

**COLOR**

D E F G H I J Faint Very Light Light

**CLARITY**

| IF                  | VS <sup>1-2</sup>           | VS <sup>1-2</sup>      | SI <sup>1-2</sup> | I <sup>1-3</sup> |
|---------------------|-----------------------------|------------------------|-------------------|------------------|
| Internally Flawless | Very Very Slightly Included | Very Slightly Included | Slightly Included | Included         |

