



INTERNATIONAL GEMOLOGICAL INSTITUTE

LABORATORY GROWN DIAMOND REPORT

November 7, 2024

IGI Report Number

LG662475216

Description

LABORATORY GROWN DIAMOND

Shape and Cutting Style

PRINCESS CUT

Measurements

4.28 X 4.26 X 3.04 MM

GRADING RESULTS

Carat Weight

0.49 CARAT

Color Grade

E

Clarity Grade

VVS 1

ADDITIONAL GRADING INFORMATION

Polish

VERY GOOD

Symmetry

VERY GOOD

Fluorescence

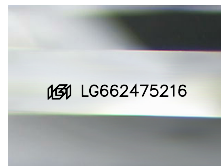
NONE

Inscription(s)

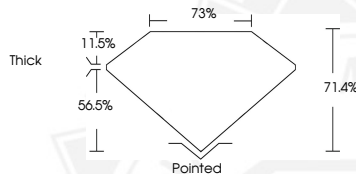
IGI LG662475216

Comments: This Laboratory Grown Diamond was created by Chemical Vapor Deposition (CVD) growth process. Type IIa

ELECTRONIC COPY



Sample Image Used



November 7, 2024

IGI Report Number LG662475216

PRINCESS CUT

LABORATORY GROWN DIAMOND

4.28 X 4.26 X 3.04 MM

Carat Weight 0.49 CARAT

Color Grade E

Clarity Grade VVS 1

Polish VERY GOOD

Symmetry VERY GOOD

Fluorescence NONE

Inscription(s) IGI LG662475216

Comments: This Laboratory Grown Diamond was created by Chemical Vapor Deposition (CVD) growth process. Type IIa



November 7, 2024

IGI Report Number LG662475216

PRINCESS CUT

LABORATORY GROWN DIAMOND

4.28 X 4.26 X 3.04 MM

Carat Weight 0.49 CARAT

Color Grade E

Clarity Grade VVS 1

Polish VERY GOOD

Symmetry VERY GOOD

Fluorescence NONE

Inscription(s) IGI LG662475216

Comments: This Laboratory Grown Diamond was created by Chemical Vapor Deposition (CVD) growth process. Type IIa



THIS DOCUMENT WAS PRODUCED WITH THE FOLLOWING SECURITY MEASURES: SPECIAL DOCUMENT PAPER, INK SCREENS, WATERMARK, BACKGROUND DESIGN, HOLOGRAM AND OTHER SECURITY FEATURES NOT LISTED AND DO EXCEED DOCUMENT SECURITY INDUSTRY GUIDELINES.

For terms & conditions and to verify this report, please visit www.igi.org