



ELECTRONIC COPY

LG662478657
Report verification at igi.org



November 15, 2024

IGI Report Number LG662478657

Description LABORATORY GROWN DIAMOND

Shape and Cutting Style CUT CORNERED RECTANGULAR MODIFIED BRILLIANT

Measurements 7.18 X 4.88 X 3.19 MM

GRADING RESULTS

Carat Weight 1.02 CARAT

Color Grade FANCY VIVID YELLOW

Clarity Grade VS 1

November 15, 2024
IGI Report Number LG662478657
Description LABORATORY GROWN DIAMOND
Shape and Cutting Style CUT CORNERED RECTANGULAR MODIFIED BRILLIANT
Measurements 7.18 X 4.88 X 3.19 MM

GRADING RESULTS

Carat Weight 1.02 CARAT

Color Grade FANCY VIVID YELLOW

Clarity Grade VS 1

ADDITIONAL GRADING INFORMATION

Polish EXCELLENT

Symmetry EXCELLENT

Fluorescence VERY SLIGHT

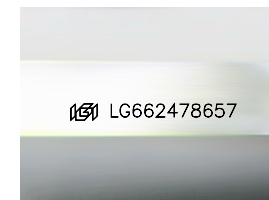
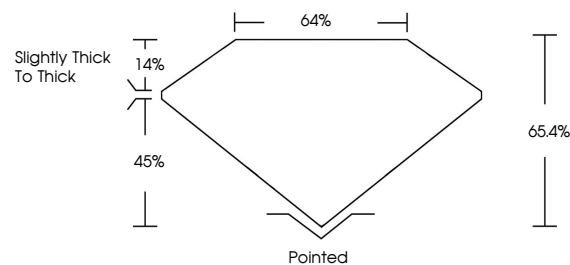
Inscription(s) IGI LG662478657

Comments: This Laboratory Grown Diamond was created by Chemical Vapor Deposition (CVD) growth process.

Indications of post-growth treatment.

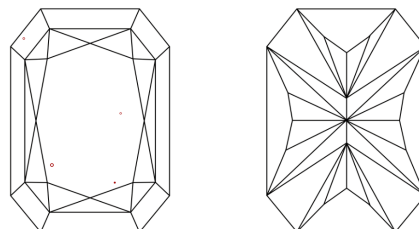
Secondary color: Grey

PROPORTIONS



Sample Image Used

CLARITY CHARACTERISTICS



KEY TO SYMBOLS

Red symbols indicate internal characteristics. Green symbols indicate external characteristics.

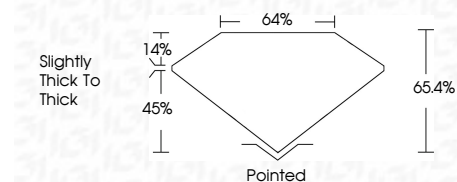
COLOR

D E F G H I J Faint Very Light Light

CLARITY

IF VS 1-2 VS 1-2 SI 1-2 I 1-3

Internally Flawless Very Very Slightly Included Very Slightly Included Slightly Included Included



ADDITIONAL GRADING INFORMATION

Polish EXCELLENT

Symmetry EXCELLENT

Fluorescence VERY SLIGHT

Inscription(s) IGI LG662478657

Comments: This Laboratory Grown Diamond was created by Chemical Vapor Deposition (CVD) growth process.

Indications of post-growth treatment.

Secondary color: Grey



November 15, 2024
IGI Report No. LG662478657
CUT CORNERED RECT. MODIFIED BRILLIANT
7.18 X 4.88 X 3.19 MM
1.02 CARAT
FANCY VIVID YELLOW
VS 1
65.4%
Slightly Thick To Thick
Pointed
EXCELLENT
EXCELLENT
VERY SLIGHT
IGI LG662478657
Comments: This Laboratory Grown Diamond was created by Chemical Vapor Deposition (CVD) growth process. Indications of post-growth treatment. Secondary color: Grey