



**ELECTRONIC COPY**

LG662482098  
Report verification at igi.org



November 10, 2024

IGI Report Number **LG662482098**

Description **LABORATORY GROWN DIAMOND**

Shape and Cutting Style **ROUND BRILLIANT**

Measurements **8.21 - 8.25 X 4.84 MM**

**GRADING RESULTS**

Carat Weight **2.02 CARATS**

Color Grade **E**

Clarity Grade **VS 2**

Cut Grade **EXCELLENT**

November 10, 2024  
IGI Report Number **LG662482098**  
Description **LABORATORY GROWN DIAMOND**  
Shape and Cutting Style **ROUND BRILLIANT**  
Measurements **8.21 - 8.25 X 4.84 MM**

**GRADING RESULTS**

Carat Weight **2.02 CARATS**

Color Grade **E**

Clarity Grade **VS 2**

Cut Grade **EXCELLENT**

**ADDITIONAL GRADING INFORMATION**

Polish **EXCELLENT**

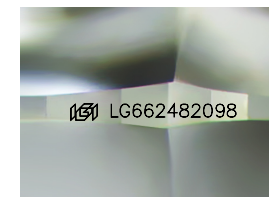
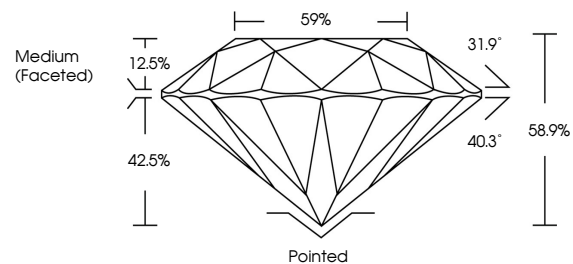
Symmetry **EXCELLENT**

Fluorescence **NONE**

Inscription(s) **LG662482098**

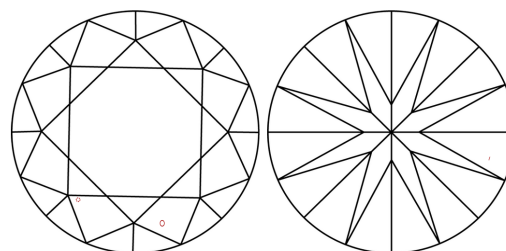
Comments: This Laboratory Grown Diamond was created by Chemical Vapor Deposition (CVD) growth process.  
Type IIa

**PROPORTIONS**



Sample Image Used

**CLARITY CHARACTERISTICS**



**KEY TO SYMBOLS**

Red symbols indicate internal characteristics.  
Green symbols indicate external characteristics.

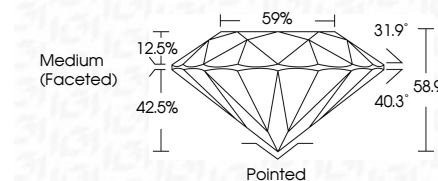
**COLOR**

D E F G H I J Faint Very Light Light

**CLARITY**

IF WS<sup>1-2</sup> VS<sup>1-2</sup> SI<sup>1-2</sup> I<sup>1-3</sup>

Internally Flawless Very Very Slightly Included Very Slightly Included Slightly Included Included



**ADDITIONAL GRADING INFORMATION**

Polish **EXCELLENT**

Symmetry **EXCELLENT**

Fluorescence **NONE**

Inscription(s) **LG662482098**

Comments: This Laboratory Grown Diamond was created by Chemical Vapor Deposition (CVD) growth process.  
Type IIa



**IGI**



|  |                           |              |             |               |           |           |           |        |                  |           |           |              |                |                 |      |      |      |
|--|---------------------------|--------------|-------------|---------------|-----------|-----------|-----------|--------|------------------|-----------|-----------|--------------|----------------|-----------------|------|------|------|
| November 10, 2024  | IGI Report No LG662482098 | 2.02 CARATS  | E           | VS 2          | EXCELLENT | EXCELLENT | EXCELLENT | None   | Pointed          | EXCELLENT | EXCELLENT | None         | None           | None            | None | None | None |
| 8.21 - 8.25 X 4.84 MM  | ROUND BRILLIANT           | Carat Weight | Color Grade | Clarity Grade | Cut Grade | Depth     | Table     | Girdle | Medium (Faceted) | Polish    | Symmetry  | Fluorescence | Inscription(s) | IGI LG662482098 | None | None | None |
| Comments: This Laboratory Grown Diamond was created by Chemical Vapor Deposition (CVD) growth process.<br>Type IIa |                           |              |             |               |           |           |           |        |                  |           |           |              |                |                 |      |      |      |