



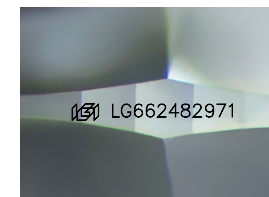
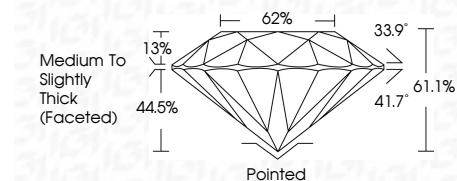
ELECTRONIC COPY

LG662482971
Report verification at igi.org



November 10, 2024
IGI Report Number LG662482971
Description LABORATORY GROWN DIAMOND
Shape and Cutting Style ROUND BRILLIANT
Measurements 9.13 - 9.18 X 5.59 MM

GRADING RESULTS
Carat Weight 2.87 CARATS
Color Grade F
Clarity Grade VVS 2
Cut Grade EXCELLENT



Sample Image Used

ADDITIONAL GRADING INFORMATION
Polish EXCELLENT
Symmetry EXCELLENT
Fluorescence NONE
Inscription(s) IGI LG662482971
Comments: This Laboratory Grown Diamond was created by Chemical Vapor Deposition (CVD) growth process. Type IIa



November 10, 2024
IGI Report No LG662482971
ROUND BRILLIANT
9.13 - 9.18 X 5.59 MM
2.87 CARATS
F
VVS 2
EXCELLENT
61.1%
62%
Medium To Slightly Thick (Faceted)
Pointed
EXCELLENT
EXCELLENT
NONE
IGI LG662482971
Comments: This Laboratory Grown Diamond was created by Chemical Vapor Deposition (CVD) growth process. Type IIa

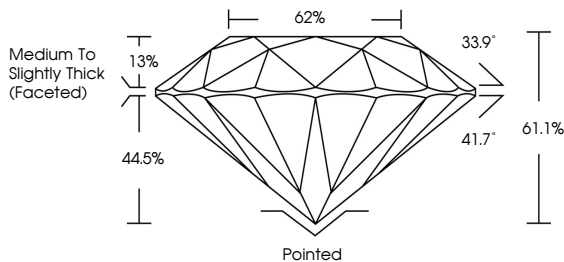
November 10, 2024
IGI Report Number LG662482971
Description LABORATORY GROWN DIAMOND
Shape and Cutting Style ROUND BRILLIANT
Measurements 9.13 - 9.18 X 5.59 MM

GRADING RESULTS
Carat Weight 2.87 CARATS
Color Grade F
Clarity Grade VVS 2
Cut Grade EXCELLENT

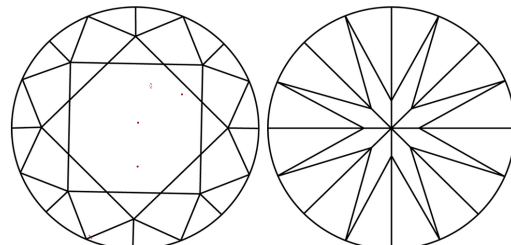
ADDITIONAL GRADING INFORMATION
Polish EXCELLENT
Symmetry EXCELLENT
Fluorescence NONE
Inscription(s) IGI LG662482971

Comments: This Laboratory Grown Diamond was created by Chemical Vapor Deposition (CVD) growth process. Type IIa

PROPORTIONS



CLARITY CHARACTERISTICS



KEY TO SYMBOLS
Red symbols indicate internal characteristics.
Green symbols indicate external characteristics.

Table with columns D, E, F, G, H, I, J and values Faint, Very Light, Light

Table with columns IF, WS 1-2, VS 1-2, SI 1-2, I 1-3 and values Internally Flawless, Very Very Slightly Included, Very Slightly Included, Slightly Included, Included

