



ELECTRONIC COPY

LG662485374
Report verification at igi.org



November 8, 2024

IGI Report Number **LG662485374**

Description **LABORATORY GROWN DIAMOND**

Shape and Cutting Style **OVAL BRILLIANT**

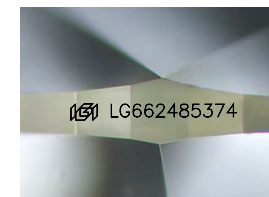
Measurements **10.55 X 7.53 X 4.72 MM**

GRADING RESULTS

Carat Weight **2.41 CARATS**

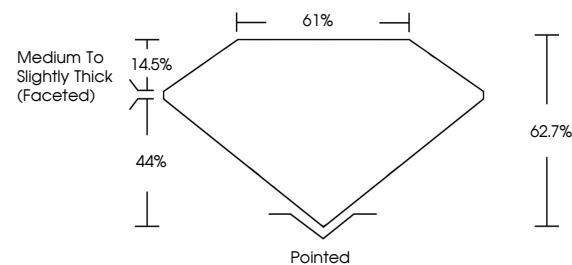
Color Grade **E**

Clarity Grade **VS 2**

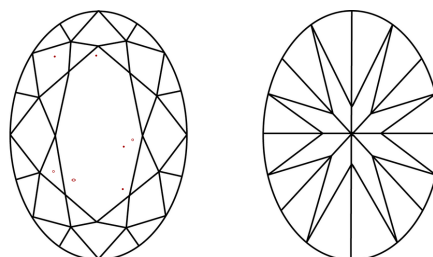


Sample Image Used

PROPORTIONS



CLARITY CHARACTERISTICS



KEY TO SYMBOLS

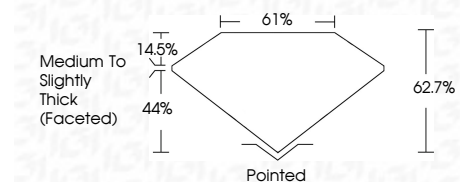
Red symbols indicate internal characteristics.
Green symbols indicate external characteristics.

COLOR

D E F G H I J Faint Very Light Light

CLARITY

IF	VS ¹⁻²	VS ¹⁻²	SI ¹⁻²	I ¹⁻³
Internally Flawless	Very Very Slightly Included	Very Slightly Included	Slightly Included	Included



ADDITIONAL GRADING INFORMATION

Polish **EXCELLENT**

Symmetry **EXCELLENT**

Fluorescence **NONE**

Inscription(s) **IGI LG662485374**

Comments: This Laboratory Grown Diamond was created by Chemical Vapor Deposition (CVD) growth process. Type IIa



IGI



November 8, 2024	2.41 CARATS	E	VS 2	61%	Pointed
IGI Report No LG662485374	10.55 X 7.53 X 4.72 MM	Color Grade	Depth	Table	Culet
OVAL BRILLIANT		Clarity Grade	Girdle	Medium to Slightly Thick (Faceted)	Polish
					Symmetry
					Fluorescence
					Inscription(s)
					IGI LG662485374

Comments: This Laboratory Grown Diamond was created by Chemical Vapor Deposition (CVD) growth process. Type IIa