



**ELECTRONIC COPY**

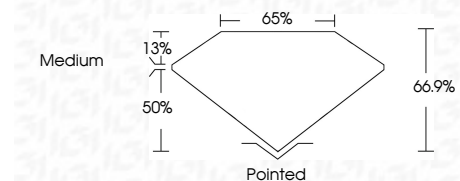
LG662485920  
Report verification at igi.org



October 27, 2024  
IGI Report Number **LG662485920**  
Description **LABORATORY GROWN DIAMOND**  
Shape and Cutting Style **CUT CORNERED  
RECTANGULAR MODIFIED  
BRILLIANT**  
Measurements **11.25 X 7.88 X 5.27 MM**

**GRADING RESULTS**

Carat Weight **4.10 CARATS**  
Color Grade **H**  
Clarity Grade **VS 1**

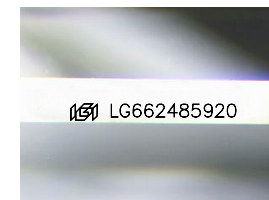


**ADDITIONAL GRADING INFORMATION**

Polish **EXCELLENT**  
Symmetry **EXCELLENT**  
Fluorescence **NONE**  
Inscription(s) **IGI LG662485920**  
Comments: This Laboratory Grown Diamond was created by Chemical Vapor Deposition (CVD) growth process. Type IIa

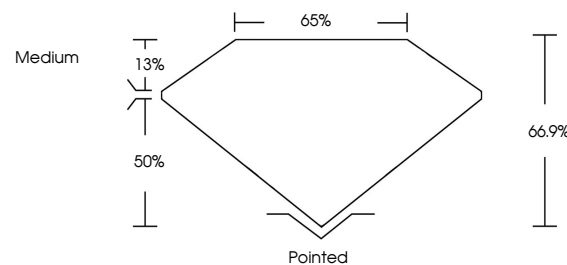


October 27, 2024  
IGI Report No. LG662485920  
CUT CORNERED RECT. MODIFIED BRILLIANT  
11.25 X 7.88 X 5.27 MM  
4.10 CARATS  
H  
VS 1  
66.9%  
50%  
Medium  
Pointed  
EXCELLENT  
EXCELLENT  
NONE  
IGI LG662485920  
Comments: This Laboratory Grown Diamond was created by Chemical Vapor Deposition (CVD) growth process. Type IIa

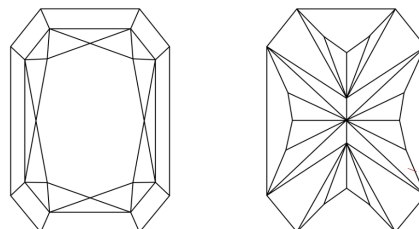


Sample Image Used

**PROPORTIONS**



**CLARITY CHARACTERISTICS**



**KEY TO SYMBOLS**

Red symbols indicate internal characteristics.  
Green symbols indicate external characteristics.

**COLOR**

D E F G H I J Faint Very Light Light

**CLARITY**

IF	VS <sup>1-2</sup>	VS <sup>1-2</sup>	SI <sup>1-2</sup>	I <sup>1-3</sup>
Internally Flawless	Very Very Slightly Included	Very Slightly Included	Slightly Included	Included

