



ELECTRONIC COPY

LG662489061
Report verification at igi.org



November 18, 2024

IGI Report Number **LG662489061**

Description **LABORATORY GROWN DIAMOND**

Shape and Cutting Style **ROUND BRILLIANT**

Measurements **8.43 - 8.48 X 5.14 MM**

GRADING RESULTS

Carat Weight **2.26 CARATS**

Color Grade **G**

Clarity Grade **SI 2**

Cut Grade **IDEAL**

November 18, 2024

IGI Report Number **LG662489061**

Description **LABORATORY GROWN DIAMOND**

Shape and Cutting Style **ROUND BRILLIANT**

Measurements **8.43 - 8.48 X 5.14 MM**

GRADING RESULTS

Carat Weight **2.26 CARATS**

Color Grade **G**

Clarity Grade **SI 2**

Cut Grade **IDEAL**

ADDITIONAL GRADING INFORMATION

Polish **EXCELLENT**

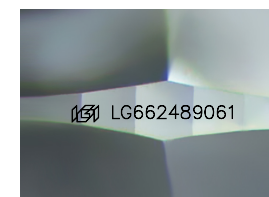
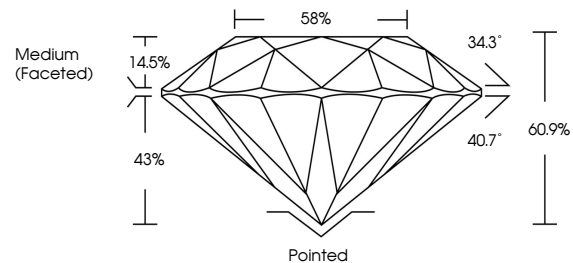
Symmetry **EXCELLENT**

Fluorescence **NONE**

Inscription(s) **IGI LG662489061**

Comments: This Laboratory Grown Diamond was created by Chemical Vapor Deposition (CVD) growth process. Type IIa

PROPORTIONS



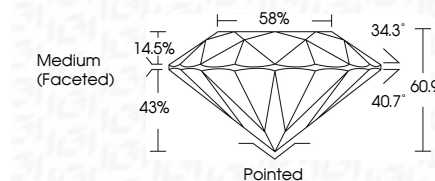
Sample Image Used

COLOR

D E F G H I J Faint Very Light Light

CLARITY

IF	VS ¹⁻²	VS ¹⁻²	SI ¹⁻²	I ¹⁻³
Internally Flawless	Very Very Slightly Included	Very Slightly Included	Slightly Included	Included



ADDITIONAL GRADING INFORMATION

Polish **EXCELLENT**

Symmetry **EXCELLENT**

Fluorescence **NONE**

Inscription(s) **IGI LG662489061**

Comments: This Laboratory Grown Diamond was created by Chemical Vapor Deposition (CVD) growth process. Type IIa



IGI



November 18, 2024
IGI Report No LG662489061
ROUND BRILLIANT
8.43 - 8.48 X 5.14 MM
2.26 CARATS
Color Grade G
Clarity Grade SI 2
Depth IDEAL
Table 60.9%
Girdle 43%
Medium (Faceted)
Culet Pointed
Polish EXCELLENT
Symmetry EXCELLENT
Fluorescence NONE
Inscription(s) IGI LG662489061
Comments: This Laboratory Grown Diamond was created by Chemical Vapor Deposition (CVD) growth process. Type IIa