



ELECTRONIC COPY

LG663402406
Report verification at igi.org



November 20, 2024

IGI Report Number LG663402406

Description LABORATORY GROWN DIAMOND

Shape and Cutting Style ROUND BRILLIANT

Measurements 12.07 - 12.17 X 7.37 MM

GRADING RESULTS

Carat Weight 6.80 CARATS

Color Grade F

Clarity Grade VVS 2

Cut Grade IDEAL

November 20, 2024
IGI Report Number LG663402406
Description LABORATORY GROWN DIAMOND
Shape and Cutting Style ROUND BRILLIANT
Measurements 12.07 - 12.17 X 7.37 MM

GRADING RESULTS

Carat Weight 6.80 CARATS

Color Grade F

Clarity Grade VVS 2

Cut Grade IDEAL

ADDITIONAL GRADING INFORMATION

Polish EXCELLENT

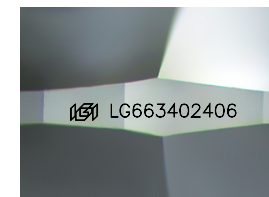
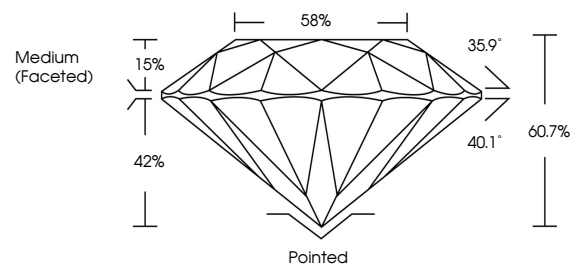
Symmetry EXCELLENT

Fluorescence NONE

Inscription(s) IGI LG663402406

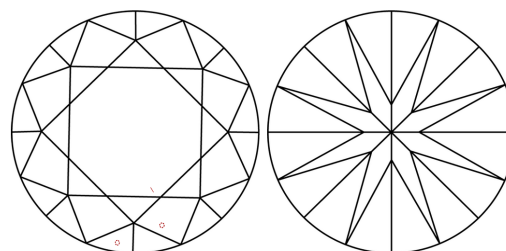
Comments: This Laboratory Grown Diamond was created by Chemical Vapor Deposition (CVD) growth process. Type IIa

PROPORTIONS



Sample Image Used

CLARITY CHARACTERISTICS



KEY TO SYMBOLS

Red symbols indicate internal characteristics. Green symbols indicate external characteristics.

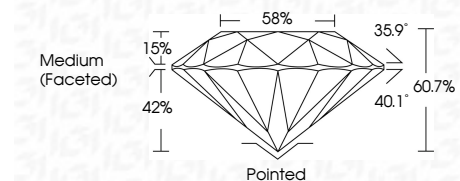
COLOR

D E F G H I J Faint Very Light Light

CLARITY

IF VS 1-2 VS 1-2 SI 1-2 I 1-3

Internally Flawless Very Very Slightly Included Very Slightly Included Slightly Included Included



ADDITIONAL GRADING INFORMATION

Polish EXCELLENT

Symmetry EXCELLENT

Fluorescence NONE

Inscription(s) IGI LG663402406

Comments: This Laboratory Grown Diamond was created by Chemical Vapor Deposition (CVD) growth process. Type IIa



IGI



Summary table of report details including date, report number, description, measurements, grading results, and additional information.