



ELECTRONIC COPY

LG663403916
Report verification at igi.org



November 20, 2024

IGI Report Number LG663403916

Description LABORATORY GROWN DIAMOND

Shape and Cutting Style ROUND BRILLIANT

Measurements 10.28 - 10.33 X 6.08 MM

GRADING RESULTS

Carat Weight 4.01 CARATS

Color Grade F

Clarity Grade VS 2

Cut Grade EXCELLENT

November 20, 2024
IGI Report Number LG663403916
Description LABORATORY GROWN DIAMOND
Shape and Cutting Style ROUND BRILLIANT
Measurements 10.28 - 10.33 X 6.08 MM

GRADING RESULTS

Carat Weight 4.01 CARATS

Color Grade F

Clarity Grade VS 2

Cut Grade EXCELLENT

ADDITIONAL GRADING INFORMATION

Polish EXCELLENT

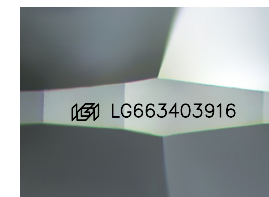
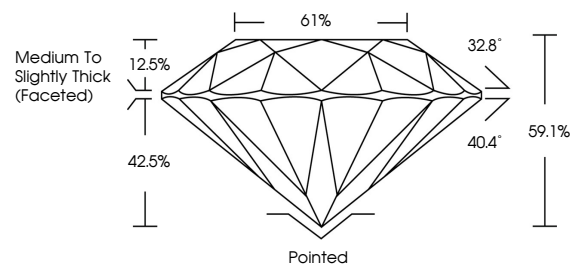
Symmetry EXCELLENT

Fluorescence NONE

Inscription(s) IGI LG663403916

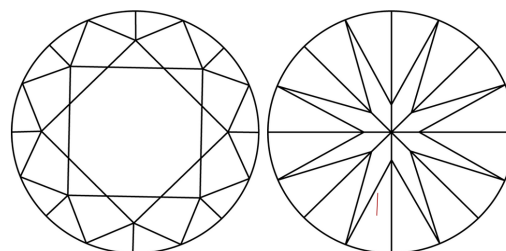
Comments: This Laboratory Grown Diamond was created by Chemical Vapor Deposition (CVD) growth process. Type IIa

PROPORTIONS



Sample Image Used

CLARITY CHARACTERISTICS



KEY TO SYMBOLS

Red symbols indicate internal characteristics.
Green symbols indicate external characteristics.

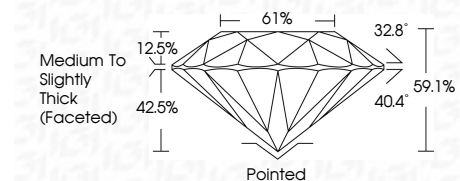
COLOR

D E F G H I J Faint Very Light Light

CLARITY

IF WS 1-2 VS 1-2 SI 1-2 I 1-3

Internally Flawless Very Very Slightly Included Very Slightly Included Slightly Included Included



ADDITIONAL GRADING INFORMATION

Polish EXCELLENT

Symmetry EXCELLENT

Fluorescence NONE

Inscription(s) IGI LG663403916

Comments: This Laboratory Grown Diamond was created by Chemical Vapor Deposition (CVD) growth process. Type IIa



IGI



Summary table of report details: November 20, 2024, IGI Report No LG663403916, ROUND BRILLIANT, 10.28 - 10.33 X 6.08 MM, 4.01 CARATS, F, VS 2, EXCELLENT, 61%, 61%, Medium To Slightly Thick (Faceted), Pointed, EXCELLENT, EXCELLENT, NONE, IGI LG663403916. Comments: This Laboratory Grown Diamond was created by Chemical Vapor Deposition (CVD) growth process. Type IIa