



ELECTRONIC COPY

LG663405707
Report verification at igi.org



November 18, 2024
IGI Report Number **LG663405707**

Description **LABORATORY GROWN DIAMOND**

Shape and Cutting Style **CUT CORNERED
RECTANGULAR MODIFIED
BRILLIANT**

Measurements **7.72 X 5.66 X 3.89 MM**

GRADING RESULTS

Carat Weight **1.60 CARAT**

Color Grade **FANCY INTENSE YELLOW**

Clarity Grade **VVS 2**

LABORATORY GROWN DIAMOND REPORT

November 18, 2024

IGI Report Number **LG663405707**

Description **LABORATORY GROWN DIAMOND**

Shape and Cutting Style **CUT CORNERED RECTANGULAR
MODIFIED BRILLIANT**

Measurements **7.72 X 5.66 X 3.89 MM**

GRADING RESULTS

Carat Weight **1.60 CARAT**

Color Grade **FANCY INTENSE YELLOW**

Clarity Grade **VVS 2**

ADDITIONAL GRADING INFORMATION

Polish **EXCELLENT**

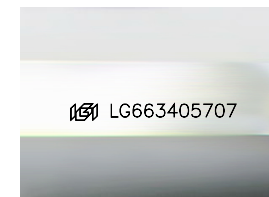
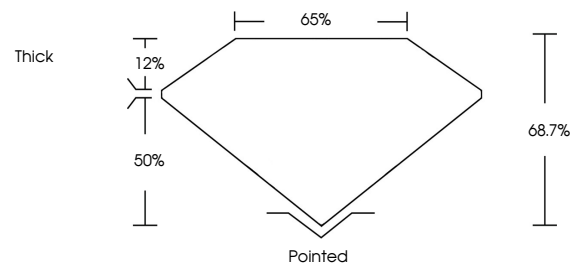
Symmetry **EXCELLENT**

Fluorescence **NONE**

Inscription(s) **IGI LG663405707**

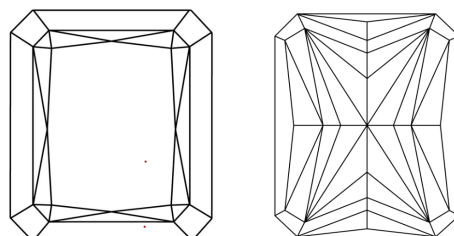
Comments: This Laboratory Grown Diamond was created by Chemical Vapor Deposition (CVD) growth process.

PROPORTIONS



Sample Image Used

CLARITY CHARACTERISTICS



KEY TO SYMBOLS

Red symbols indicate internal characteristics.
Green symbols indicate external characteristics.

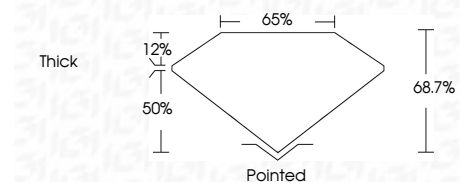
COLOR

D E F G H I J Faint Very Light Light

CLARITY

IF VS¹⁻² VS¹⁻² SI¹⁻² I¹⁻³

Internally Flawless Very Very Slightly Included Very Slightly Included Slightly Included Included



ADDITIONAL GRADING INFORMATION

Polish **EXCELLENT**

Symmetry **EXCELLENT**

Fluorescence **NONE**

Inscription(s) **IGI LG663405707**

Comments: This Laboratory Grown Diamond was created by Chemical Vapor Deposition (CVD) growth process.



IGI



November 18, 2024
IGI Report No. LG663405707
CUT CORNERED RECT. MODIFIED BRILLIANT
1.60 CARAT
FANCY INTENSE YELLOW
VVS 2
7.72 X 5.66 X 3.89 MM
68.7%
50%
Thick
Pointed
EXCELLENT
EXCELLENT
NONE
IGI LG663405707
Comments: This Laboratory Grown Diamond was created by Chemical Vapor Deposition (CVD) growth process.