



ELECTRONIC COPY

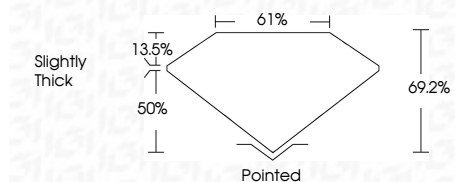
LG663405930
Report verification at igi.org



November 18, 2024
IGI Report Number **LG663405930**
Description **LABORATORY GROWN DIAMOND**
Shape and Cutting Style **CUT CORNERED
RECTANGULAR MODIFIED
BRILLIANT**
Measurements **10.01 X 6.89 X 4.77 MM**

GRADING RESULTS

Carat Weight **3.10 CARATS**
Color Grade **FANCY INTENSE YELLOW**
Clarity Grade **VVS 2**



ADDITIONAL GRADING INFORMATION

Polish **EXCELLENT**
Symmetry **EXCELLENT**
Fluorescence **NONE**
Inscription(s) **IGI LG663405930**
Comments: This Laboratory Grown Diamond was created by Chemical Vapor Deposition (CVD) growth process.



IGI

November 18, 2024
IGI Report No. LG663405930
CUT CORNERED RECT. MODIFIED BRILLIANT
10.01 X 6.89 X 4.77 MM
3.10 CARATS
FANCY INTENSE YELLOW
VVS 2
69.2%
61%
Slightly Thick
Pointed
EXCELLENT
EXCELLENT
NONE
IGI LG663405930
Comments: This Laboratory Grown Diamond was created by Chemical Vapor Deposition (CVD) growth process.

LABORATORY GROWN DIAMOND REPORT

November 18, 2024
IGI Report Number **LG663405930**
Description **LABORATORY GROWN DIAMOND**
Shape and Cutting Style **CUT CORNERED RECTANGULAR
MODIFIED BRILLIANT**
Measurements **10.01 X 6.89 X 4.77 MM**

GRADING RESULTS

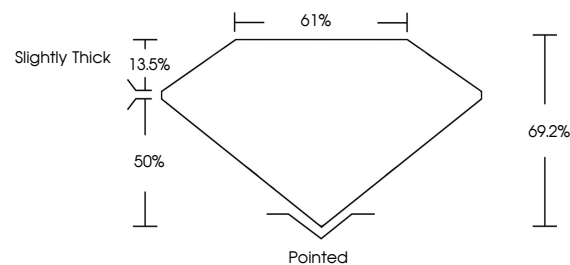
Carat Weight **3.10 CARATS**
Color Grade **FANCY INTENSE YELLOW**
Clarity Grade **VVS 2**

ADDITIONAL GRADING INFORMATION

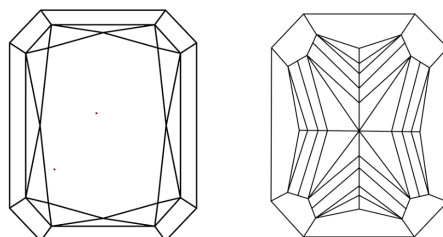
Polish **EXCELLENT**
Symmetry **EXCELLENT**
Fluorescence **NONE**
Inscription(s) **IGI LG663405930**

Comments: This Laboratory Grown Diamond was created by Chemical Vapor Deposition (CVD) growth process.

PROPORTIONS

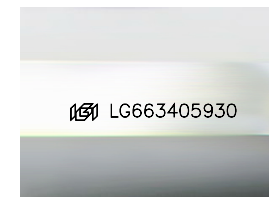


CLARITY CHARACTERISTICS



KEY TO SYMBOLS

Red symbols indicate internal characteristics.
Green symbols indicate external characteristics.



Sample Image Used

COLOR

D E F G H I J Faint Very Light Light

CLARITY

IF VS¹⁻² VS¹⁻² SI¹⁻² I¹⁻³

Internally Flawless Very Very Slightly Included Very Slightly Included Slightly Included Included

