



ELECTRONIC COPY

LG665402045
Report verification at igi.org



November 18, 2024

IGI Report Number **LG665402045**

Description **LABORATORY GROWN DIAMOND**

Shape and Cutting Style **PRINCESS CUT**

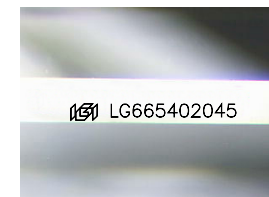
Measurements **8.74 X 8.73 X 6.13 MM**

GRADING RESULTS

Carat Weight **4.08 CARATS**

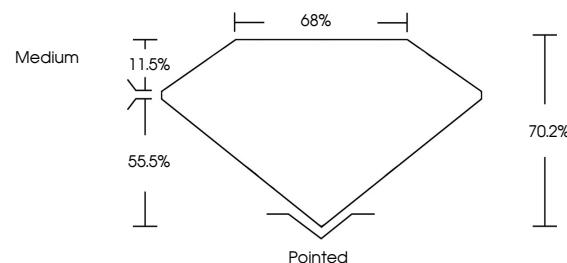
Color Grade **D**

Clarity Grade **VVS 1**

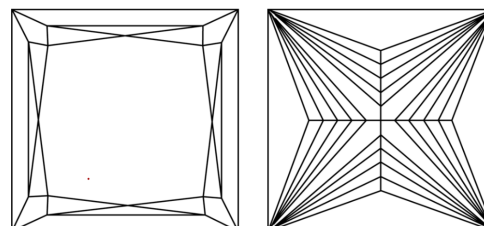


Sample Image Used

PROPORTIONS



CLARITY CHARACTERISTICS



KEY TO SYMBOLS

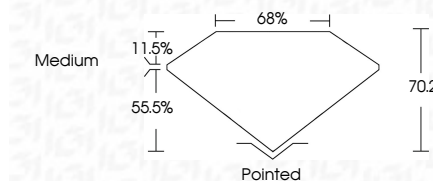
Red symbols indicate internal characteristics.
Green symbols indicate external characteristics.

COLOR

D E F G H I J Faint Very Light Light

CLARITY

IF	VS ¹⁻²	VS ¹⁻²	SI ¹⁻²	I ¹⁻³
Internally Flawless	Very Very Slightly Included	Very Slightly Included	Slightly Included	Included



ADDITIONAL GRADING INFORMATION

Polish **EXCELLENT**

Symmetry **EXCELLENT**

Fluorescence **NONE**

Inscription(s) **IGI LG665402045**

Comments: This Laboratory Grown Diamond was created by Chemical Vapor Deposition (CVD) growth process.
Type IIa



IGI



November 18, 2024
IGI Report No. LG665402045
PRINCESS CUT
8.74 X 8.73 X 6.13 MM
4.08 CARATS
D
Color Grade
VVS 1
Depth 70.2%
Table 11.5%
Girdle
Medium
Pointed
EXCELLENT
EXCELLENT
NONE
IGI LG665402045
Comments: This Laboratory Grown Diamond was created by Chemical Vapor Deposition (CVD) growth process.
Type IIa