



ELECTRONIC COPY

LG665402127
Report verification at igi.org



November 15, 2024

IGI Report Number **LG665402127**

Description **LABORATORY GROWN DIAMOND**

Shape and Cutting Style **PRINCESS CUT**

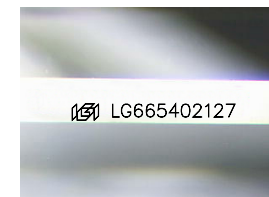
Measurements **8.84 X 8.83 X 6.17 MM**

GRADING RESULTS

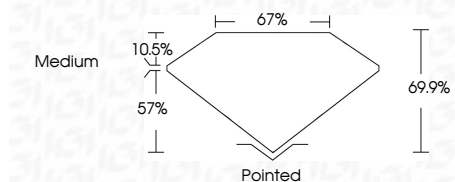
Carat Weight **4.09 CARATS**

Color Grade **D**

Clarity Grade **VVS 2**



Sample Image Used



ADDITIONAL GRADING INFORMATION

Polish **EXCELLENT**

Symmetry **EXCELLENT**

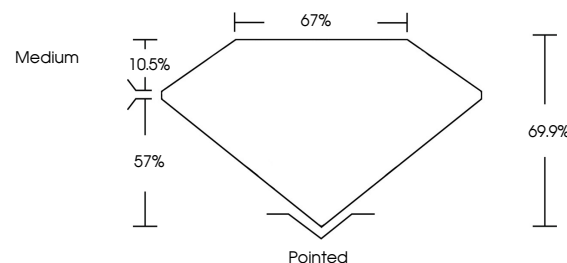
Fluorescence **NONE**

Inscription(s) **IGI LG665402127**

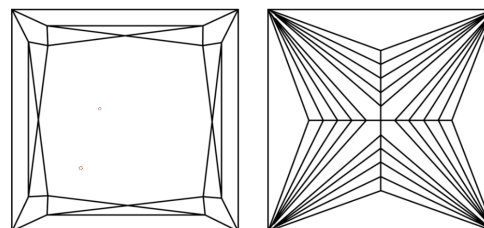
Comments: This Laboratory Grown Diamond was created by Chemical Vapor Deposition (CVD) growth process. Type IIa



PROPORTIONS



CLARITY CHARACTERISTICS



KEY TO SYMBOLS

Red symbols indicate internal characteristics.
Green symbols indicate external characteristics.

COLOR

D E F G H I J Faint Very Light Light

CLARITY

IF	VS ¹⁻²	VS ¹⁻²	SI ¹⁻²	I ¹⁻³
Internally Flawless	Very Very Slightly Included	Very Slightly Included	Slightly Included	Included

November 15, 2024
IGI Report No LG665402127
PRINCESS CUT

4.09 CARATS
D

8.84 X 8.83 X 6.17 MM
Carat Weight
Color Grade
Clarity Grade
Depth
Table
Girdle
Medium

Pointed
EXCELLENT
EXCELLENT
NONE
IGI LG665402127

Culet
Polish
Symmetry
Fluorescence
Inscription(s)

Comments: This Laboratory Grown Diamond was created by Chemical Vapor Deposition (CVD) growth process. Type IIa

