



**ELECTRONIC COPY**

LG665402206  
Report verification at igi.org



November 18, 2024

IGI Report Number **LG665402206**

Description **LABORATORY GROWN DIAMOND**

Shape and Cutting Style **PRINCESS CUT**

Measurements **9.12 X 9.08 X 6.30 MM**

**GRADING RESULTS**

Carat Weight **4.58 CARATS**

Color Grade **E**

Clarity Grade **VVS 1**

**LABORATORY GROWN DIAMOND REPORT**

November 18, 2024

IGI Report Number **LG665402206**

Description **LABORATORY GROWN DIAMOND**

Shape and Cutting Style **PRINCESS CUT**

Measurements **9.12 X 9.08 X 6.30 MM**

**GRADING RESULTS**

Carat Weight **4.58 CARATS**

Color Grade **E**

Clarity Grade **VVS 1**

**ADDITIONAL GRADING INFORMATION**

Polish **EXCELLENT**

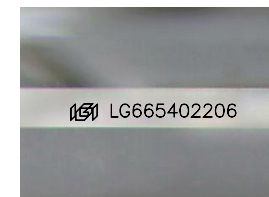
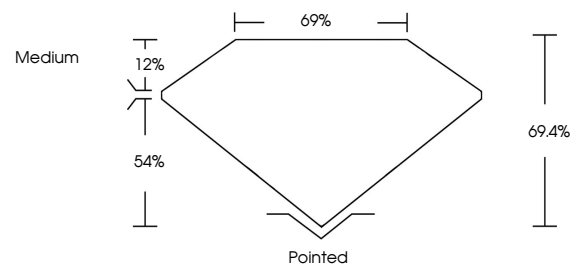
Symmetry **EXCELLENT**

Fluorescence **NONE**

Inscription(s) **IGI LG665402206**

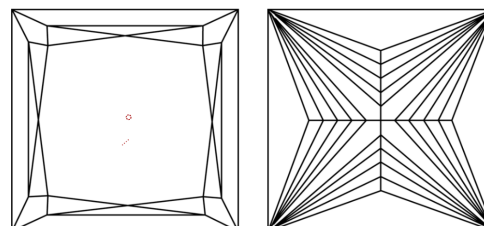
Comments: This Laboratory Grown Diamond was created by Chemical Vapor Deposition (CVD) growth process. Type IIa

**PROPORTIONS**



Sample Image Used

**CLARITY CHARACTERISTICS**



**KEY TO SYMBOLS**

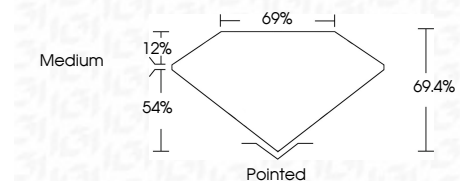
Red symbols indicate internal characteristics.  
Green symbols indicate external characteristics.

**COLOR**

D E F G H I J Faint Very Light Light

**CLARITY**

IF	VS <sup>1-2</sup>	VS <sup>1-2</sup>	SI <sup>1-2</sup>	I <sup>1-3</sup>
Internally Flawless	Very Very Slightly Included	Very Slightly Included	Slightly Included	Included



**ADDITIONAL GRADING INFORMATION**

Polish **EXCELLENT**

Symmetry **EXCELLENT**

Fluorescence **NONE**

Inscription(s) **IGI LG665402206**

Comments: This Laboratory Grown Diamond was created by Chemical Vapor Deposition (CVD) growth process. Type IIa



**IGI**



November 18, 2024  
IGI Report No. LG665402206  
PRINCESS CUT

4.58 CARATS  
E

9.12 X 9.08 X 6.30 MM  
VVS 1  
69.4%  
69%  
Medium

Pointed  
EXCELLENT  
EXCELLENT  
NONE  
NONE  
IGI LG665402206

Culet  
Polish  
Symmetry  
Fluorescence  
Inscription(s)

Comments: This Laboratory Grown Diamond was created by Chemical Vapor Deposition (CVD) growth process. Type IIa