



ELECTRONIC COPY

LABORATORY GROWN DIAMOND REPORT

November 27, 2024	
IGI Report Number	LG665402429
Description	LABORATORY GROWN DIAMOND
Shape and Cutting Style	SQUARE CUSHION MODIFIED BRILLIANT
Measurements	8.40 X 8.36 X 5.67 MM

GRADING RESULTS

Carat Weight	3.10 CARATS
Color Grade	J
Clarity Grade	VVS 2

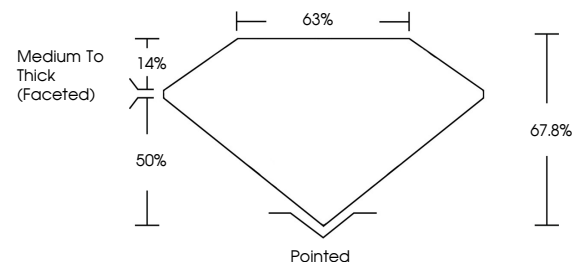
ADDITIONAL GRADING INFORMATION

Polish	EXCELLENT
Symmetry	EXCELLENT
Fluorescence	NONE
Inscription(s)	15 LG665402429

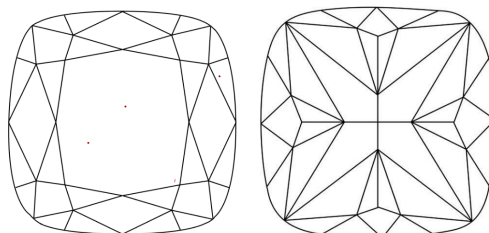
Comments: This Laboratory Grown Diamond was created by Chemical Vapor Deposition (CVD) growth process.
Type IIa

LG665402429
Report verification at lgi.org

PROPORTIONS

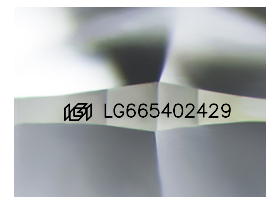


CLARITY CHARACTERISTICS



KEY TO SYMBOLS

Red symbols indicate internal characteristics.
Green symbols indicate external characteristics.



Sample Image Used

COLOR

D E F G H I J Faint Very Light Light

CLARITY

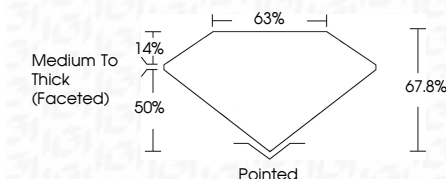
IF VWS¹⁻² VS¹⁻² SI¹⁻² I¹⁻³

Internally Flawless	Very Very Slightly Included	Very Slightly Included	Slightly Included	Included
------------------------	--------------------------------	---------------------------	----------------------	----------

LABORATORY GROWN DIAMOND REPORT



November 27, 2024	
IGI Report Number	LG665402429
Description	LABORATORY GROWN DIAMOND
Shape and Cutting Style	SQUARE CUSHION MODIFIED BRILLIANT
Measurements	8.40 X 8.36 X 5.67 MM
GRADING RESULTS	
Carat Weight	3.10 CARATS
Color Grade	J
Clarity Grade	VVS 2



ADDITIONAL GRADING INFORMATION

Polish	EXCELLENT
Symmetry	EXCELLENT
Fluorescence	NONE
Inscription(s)	 LG665402429
Comments: This Laboratory Grown Diamond was created by Chemical Vapor Deposition (CVD) growth process.	
Type IIa	



© IGI 2020, International Gemological Institute

FD - 10 20

www.igi.org

THIS DOCUMENT WAS PRODUCED WITH THE FOLLOWING SECURITY MEASURES: SPECIAL DOCUMENT PAPER, INK SCREENS, WATERMARK BACKGROUND DESIGNS, HOLOGRAM AND OTHER SECURITY FEATURES NOT LISTED AND DO EXCEED DOCUMENT SECURITY INDUSTRY GUIDELINES

November 27, 2024	Report No LG656402429	3.10 CARATS
	SQUARE CUSHION MODIFIED BRILLIANT	
	4.40 X 3.35 X 5.67 MM	
Carat Weight	Color Grade	
Clarity Grade		VVS 2
Depth		67.8%
Table		63%
Grade		Medium to Thick (faceted)
Culet		Polished
Polish		EXCELLENT
Symmetry		EXCELLENT
Fluorescence		NONE
Inscription(s)		6891LG656402429

Comments:

The Laboratory Grown Diamond was created by Chemical Vapor Deposition (CVD) growth process.

Type IId