



ELECTRONIC COPY

LG665402731
Report verification at igi.org



January 22, 2025

IGI Report Number LG665402731

Description LABORATORY GROWN DIAMOND

Shape and Cutting Style ROUND BRILLIANT

Measurements 7.93 - 7.99 X 4.86 MM

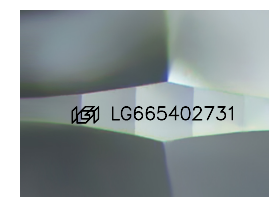
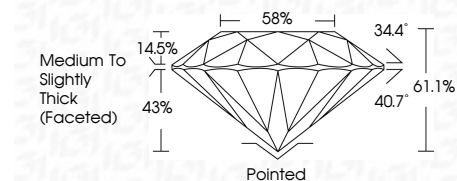
GRADING RESULTS

Carat Weight 1.91 CARAT

Color Grade G

Clarity Grade VVS 1

Cut Grade IDEAL



Sample Image Used

ADDITIONAL GRADING INFORMATION

Polish EXCELLENT

Symmetry EXCELLENT

Fluorescence NONE

Inscription(s) IGI LG665402731

Comments: This Laboratory Grown Diamond was created by Chemical Vapor Deposition (CVD) growth process. Type II



Summary table with columns: January 22, 2025, IGI Report No LG665402731, ROUND BRILLIANT, 7.93 - 7.99 X 4.86 MM, 1.91 CARAT, G, VVS 1, IDEAL, 61.1%, 58%, Medium To Slightly Thick (Faceted), Pointed, EXCELLENT, EXCELLENT, NONE, IGI LG665402731

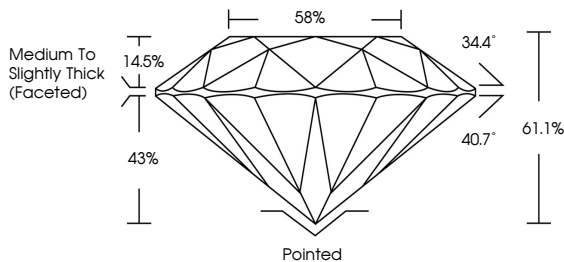
January 22, 2025
IGI Report Number LG665402731
Description LABORATORY GROWN DIAMOND
Shape and Cutting Style ROUND BRILLIANT
Measurements 7.93 - 7.99 X 4.86 MM

GRADING RESULTS
Carat Weight 1.91 CARAT
Color Grade G
Clarity Grade VVS 1
Cut Grade IDEAL

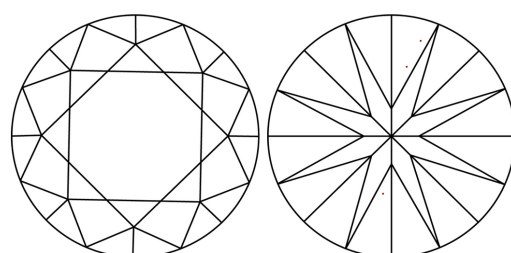
ADDITIONAL GRADING INFORMATION
Polish EXCELLENT
Symmetry EXCELLENT
Fluorescence NONE
Inscription(s) IGI LG665402731

Comments: This Laboratory Grown Diamond was created by Chemical Vapor Deposition (CVD) growth process. Type II

PROPORTIONS



CLARITY CHARACTERISTICS



KEY TO SYMBOLS
Red symbols indicate internal characteristics.
Green symbols indicate external characteristics.

COLOR

Color scale table: D, E, F, G, H, I, J, Faint, Very Light, Light

CLARITY

Clarity scale table: IF, WS 1-2, VS 1-2, SI 1-2, I 1-3, Internally Flawless, Very Very Slightly Included, Very Slightly Included, Slightly Included, Included

