

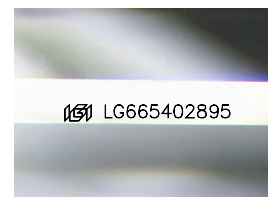
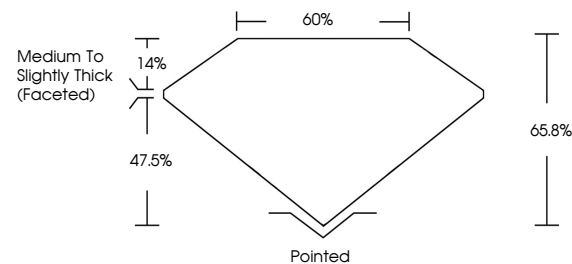


ELECTRONIC COPY

LABORATORY GROWN DIAMOND REPORT

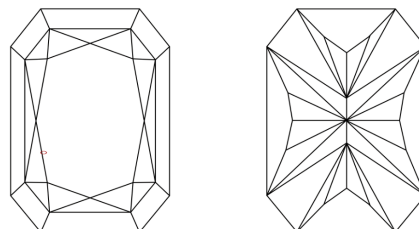
LG665402895
Report verification at igi.org

PROPORTIONS



Sample Image Used

CLARITY CHARACTERISTICS



KEY TO SYMBOLS

Red symbols indicate internal characteristics.
Green symbols indicate external characteristics.

COLOR

D E F G H I J Faint Very Light Light

CLARITY

IF WS¹⁻² VS¹⁻² SI¹⁻² |¹⁻³

Internally Flawless	Very Very Slightly Included	Very Slightly Included	Slightly Included	Included
------------------------	--------------------------------	---------------------------	----------------------	----------

LABORATORY GROWN DIAMOND REPORT



January 22, 2025

IGI Report Number **LG665402895**Description **LABORATORY GROWN DIAMOND**

Shape and Cutting Style

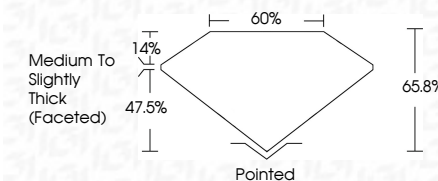
Measurements **8.16 X 5.82 X 3.83 MM**

GRADING RESULTS

Carat Weight **1.50 CARAT**

Color Grade |

Clarity Grade VS 1



ADDITIONAL GRADING INFORMATION

Polish **EXCELLENT**Symmetry **EXCELLENT**Fluorescence **NONE**Inscription(s)  LG665402895

Comments: This Laboratory Grown Diamond was created by Chemical Vapor Deposition (CVD) growth process.
Type IIa



© IGI 2020, International Gemological Institute

FD - 10 20

www.igi.org

THIS DOCUMENT WAS PRODUCED WITH THE FOLLOWING SECURITY MEASURES: SPECIAL DOCUMENT PAPER, INK SCREENS, WATERMARK, BACKGROUND DESIGNS, HOLOGRAM AND OTHER SECURITY FEATURES NOT LISTED AND DO EXCEED DOCUMENT SECURITY INDUSTRY GUIDELINE

January 22, 2025	GI Report No. LG56542895	CUT CORNERED RECT. MODIFIED BRILLIANT
	1.6 x 6.8 x 3.83 MM	1.50 CARAT
	Color Grade	I
	Clarity Grade	VS 1
	Depth	65.8%
	Gable	65%
	Table	Medium to slightly Thick Faceted
	Color	Painted
	Polish	EXCELLENT
	Symmetry	EXCELLENT
	Fluorescence	NONE
	Inscriptions(s)	1881 LG56542895

Comments:
 This is a Chemically Grown Diamond was created by Chemical Vapor Deposition (CVD) growth process.
 type IIA