



ELECTRONIC COPY

LG665403902 Report verification at igi.org



November 15, 2024 IGI Report Number LG665403902 Description LABORATORY GROWN DIAMOND Shape and Cutting Style ROUND BRILLIANT Measurements 10.16 - 10.24 X 6.20 MM GRADING RESULTS Carat Weight 4.01 CARATS Color Grade F Clarity Grade VVS 2 Cut Grade EXCELLENT

November 15, 2024 IGI Report Number LG665403902 Description LABORATORY GROWN DIAMOND Shape and Cutting Style ROUND BRILLIANT Measurements 10.16 - 10.24 X 6.20 MM

GRADING RESULTS

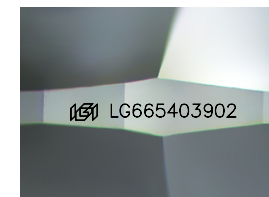
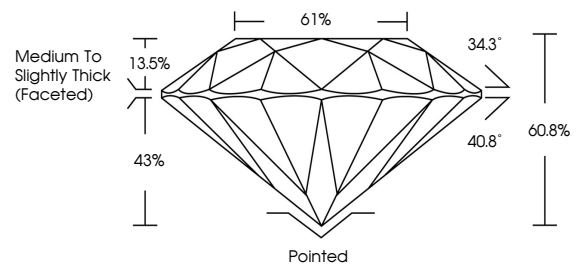
Carat Weight 4.01 CARATS Color Grade F Clarity Grade VVS 2 Cut Grade EXCELLENT

ADDITIONAL GRADING INFORMATION

Polish EXCELLENT Symmetry EXCELLENT Fluorescence NONE Inscription(s) IGI LG665403902

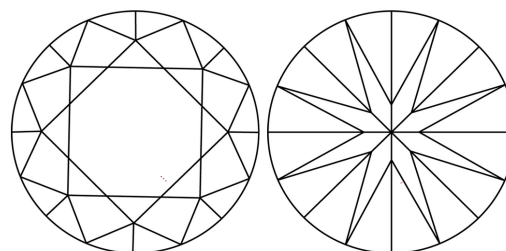
Comments: This Laboratory Grown Diamond was created by Chemical Vapor Deposition (CVD) growth process. Type IIa

PROPORTIONS



Sample Image Used

CLARITY CHARACTERISTICS



KEY TO SYMBOLS

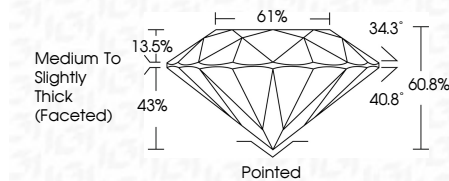
Red symbols indicate internal characteristics. Green symbols indicate external characteristics.

COLOR

D E F G H I J Faint Very Light Light

CLARITY

IF WS 1-2 VS 1-2 SI 1-2 I 1-3 Internally Flawless Very Very Slightly Included Very Slightly Included Slightly Included Included



ADDITIONAL GRADING INFORMATION

Polish EXCELLENT Symmetry EXCELLENT Fluorescence NONE Inscription(s) IGI LG665403902 Comments: This Laboratory Grown Diamond was created by Chemical Vapor Deposition (CVD) growth process. Type IIa



IGI



November 15, 2024 IGI Report No LG665403902 ROUND BRILLIANT 10.16 - 10.24 X 6.20 MM 4.01 CARATS F VVS 2 EXCELLENT 60.8% 61% Medium To Slightly Thick (Faceted) Pointed EXCELLENT EXCELLENT NONE NONE IGI LG665403902 Comments: This Laboratory Grown Diamond was created by Chemical Vapor Deposition (CVD) growth process. Type IIa