



ELECTRONIC COPY

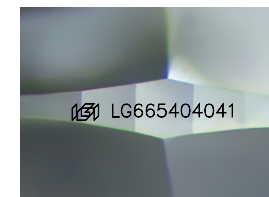
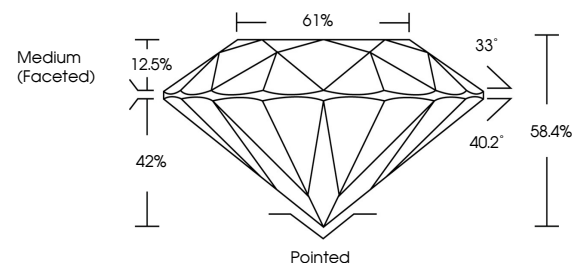
LG665404041
Report verification at igi.org



November 22, 2024
IGI Report Number LG665404041
Description LABORATORY GROWN DIAMOND
Shape and Cutting Style ROUND BRILLIANT
Measurements 14.79 - 14.87 X 8.65 MM
GRADING RESULTS
Carat Weight 11.72 CARATS
Color Grade F
Clarity Grade VS 1
Cut Grade EXCELLENT

November 22, 2024
IGI Report Number LG665404041
Description LABORATORY GROWN DIAMOND
Shape and Cutting Style ROUND BRILLIANT
Measurements 14.79 - 14.87 X 8.65 MM

PROPORTIONS

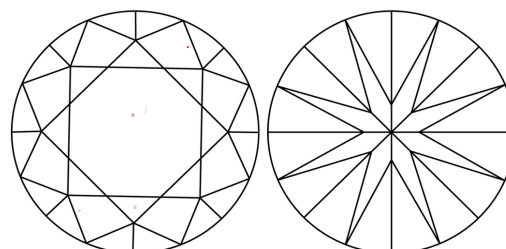


Sample Image Used

GRADING RESULTS

Carat Weight 11.72 CARATS
Color Grade F
Clarity Grade VS 1
Cut Grade EXCELLENT

CLARITY CHARACTERISTICS



KEY TO SYMBOLS

Red symbols indicate internal characteristics.
Green symbols indicate external characteristics.

ADDITIONAL GRADING INFORMATION

Polish EXCELLENT
Symmetry EXCELLENT
Fluorescence NONE
Inscription(s) IGI LG665404041

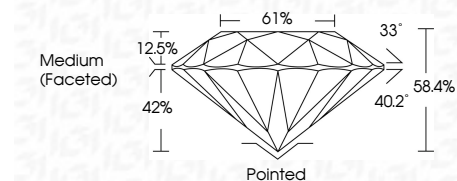
Comments: This Laboratory Grown Diamond was created by Chemical Vapor Deposition (CVD) growth process. Type IIa

COLOR

D E F G H I J Faint Very Light Light

CLARITY

IF WS 1-2 VS 1-2 SI 1-2 I 1-3
Internally Flawless Very Very Slightly Included Very Slightly Included Slightly Included Included



ADDITIONAL GRADING INFORMATION

Polish EXCELLENT
Symmetry EXCELLENT
Fluorescence NONE
Inscription(s) IGI LG665404041
Comments: This Laboratory Grown Diamond was created by Chemical Vapor Deposition (CVD) growth process. Type IIa



Summary of report details including date, report number, measurements, grading results, and additional information in a compact layout.