

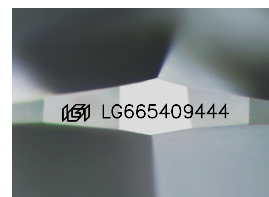
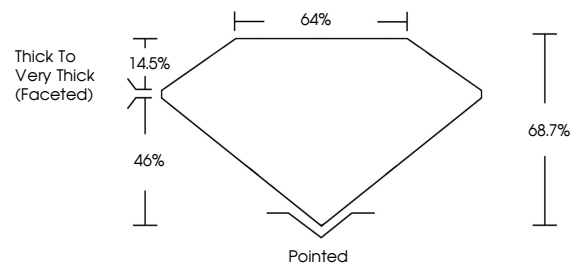


ELECTRONIC COPY

LABORATORY GROWN DIAMOND REPORT

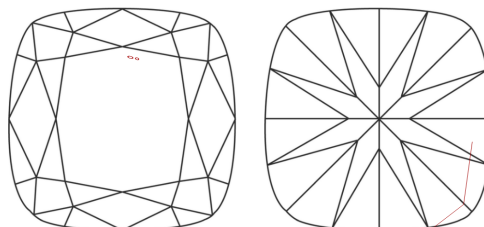
LG665409444
Report verification at lgi.org

PROPORTIONS



Sample Image Used

CLARITY CHARACTERISTICS



KEY TO SYMBOLS

Red symbols indicate internal characteristics.
Green symbols indicate external characteristics.

COLOR

D E F G H I J Faint Very Light Light

CLARITY

IF	VS ¹⁻²	VS ¹⁻²	SI ¹⁻²	I ¹⁻³
Internally Flawless	Very Very Slightly Included	Very Slightly Included	Slightly Included	Included

LABORATORY GROWN DIAMOND REPORT



January 13, 2025

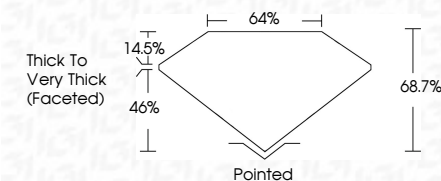
IGI Report Number **LG665409444**Description **LABORATORY GROWN DIAMOND**Shape and Cutting Style **SQUARE CUSHION BRILLIANT**

Measurements **6.06 X 5.87 X 4.03 MM**

GRADING RESULTS

Carat Weight **1.05 CARAT**

Color Grade	E
-------------	---

Clarity Grade SI 2

ADDITIONAL GRADING INFORMATION

Polish **VERY GOOD**Symmetry **EXCELLENT**Fluorescence **NONE**Inscription(s)  LG665409444

Comments: As Grown - No indication of post-growth treatment.

This Laboratory Grown Diamond was created by High Pressure High Temperature (HPHT) growth process.
Type II



January 13, 2025	1.05 CARAT
GI Report No LG56509444	S I 2
SQUARE CUSHION BRILLIANT	68.7%
	64%
	Thick to Very Thick (Faceted)
	Pointed
	VERY GOOD
	EXCELLENT
	NONE
	8891 LG56509444

Comments: As Grown - No indication of post-growth treatment.

This Laboratory Growth Diamond was created by High Pressure High Temperature (HPHT) growth process.

Type II